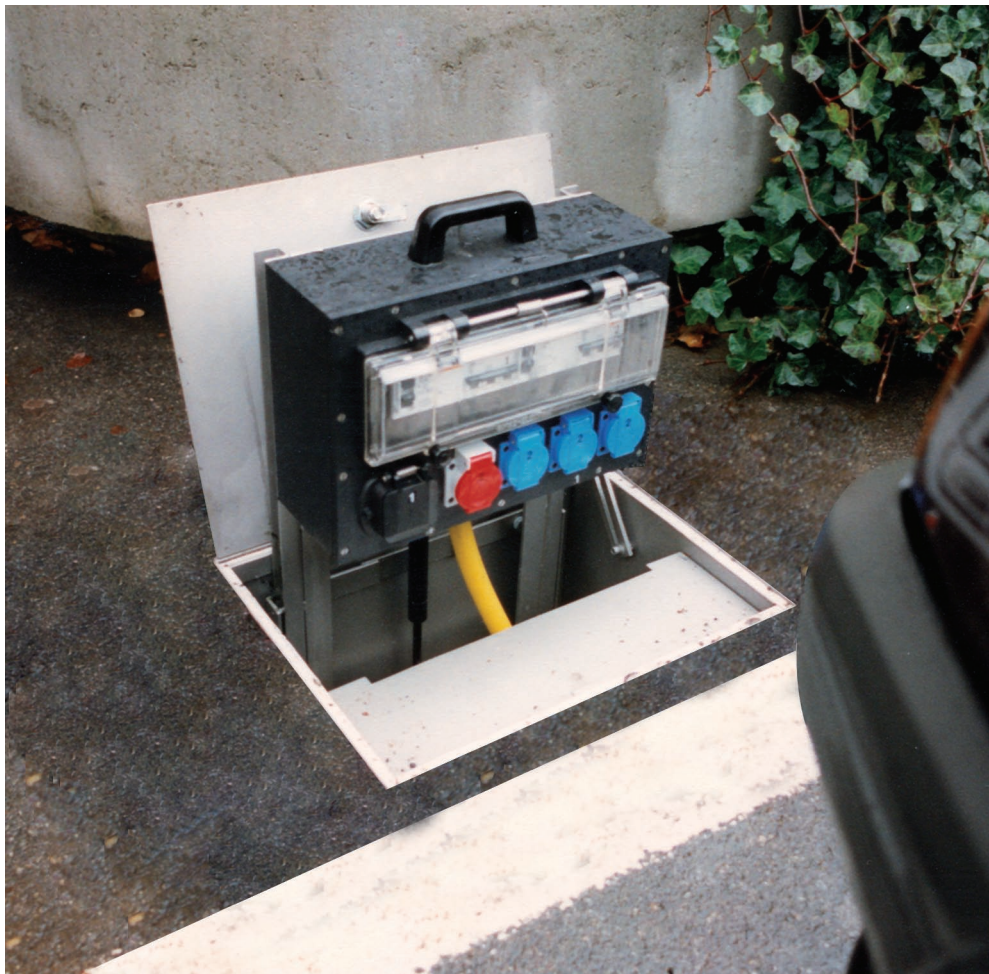


Client: Technische Betriebe Weinfelden
Object: Power supply for public events

Task:
Efficient and quick supply of energy out of the bottom. No electrical installation set up needed. „Invisible“ if not in use, with an accessible cover. In open state no risk of accident.

Our solution:



Technical details

- box made out of galvanised steel sheet
- installed extraction mechanics of aluminium profile, supported by shock absorber
- drainage directly into the sewerage system beneath
- distribution box individually equipped incl. fuse and FI protection (only one input)



- back side protected by open cover (arrested)
- lockable cover with selectable rotary bolt lock
- additional protective plate to prevent a misstep

- the electro installation does not attract any attention
- cover made of checker plate (sure-footed and accessible)

