

Client: Direction des Services Industriels / Service de l'électricité, 1000 Lausanne 9

Task:

The low-voltage installations order (NIV) regulates among other things the interface between the public power supply system and the private electrical installations.

Our standard power stations NIV, which are distributed with a lot of success, are distinguished by a strong and solid execution. Our customer had contacted us for the following two principal requests:

- a) weight as low as possible and small dimensions
- b) exchange area until 300A

Our solution:

A lightweight with high performance!

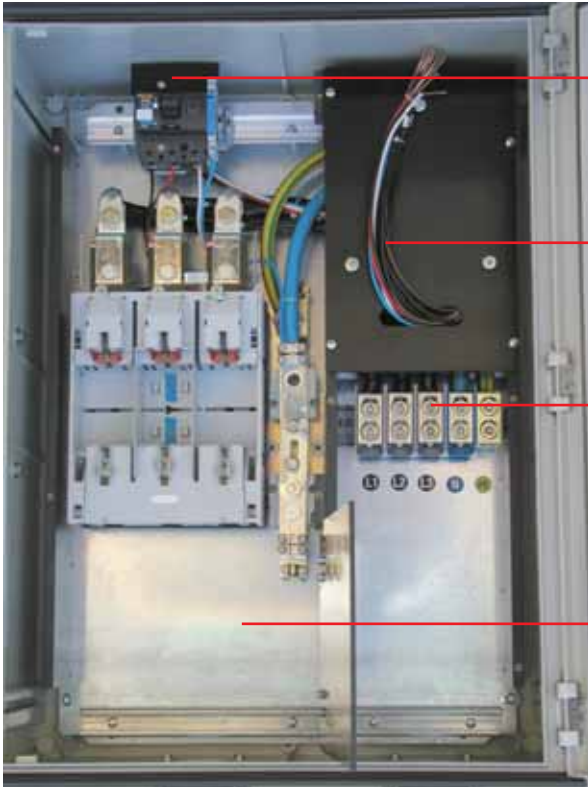
Item-No. 58813

Power station NIV 300A in synthetic distribution box

- fibre-glass reinforced polyester box with high degree of protection IP66
- simple transport facilities due to two hard rubber handles which are mounted on each side
- with integrated wall fastening brackets for a fast assembly
- interior fitting according to the order NIV:
 - separated exchange area for mains supplier and mains user
 - mains area can be locked separately



Technique in detail



control fuse in a form of an automatic circuit breaker 10A / 50VA instead of a conventional fuse element size 2 / 10A

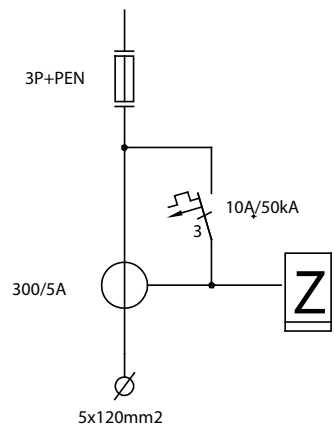
- space saving, simple handling

prewired space to install an electrical counter, delivered by the customer

- small dimensions, different makes can be installed

- solid connection terminal for efficient connection
- integrated cable clamping rail for an optimal cord anchorage

- special NH fuse circuit breaker size 2 / 300A with current transformer 300A / 5A placed below
 - current transformer 2,5 VA, only adequate for electrical counter
- connection is effected directly on the NH disconnecter
- generous connection area, can be closed separately



- Compact and light weight
- special cable glands for the insertion of cables with various dimensions
- wall fastening, on request also available with column for a loose placement

