



Dear Readers

Information is a part of everyday life, and reading is educational – an undisputed fact. But the many negative headlines leave us readers with uneasy feelings that the world is getting progressively a worse place. Paradoxically, the permanent sensationalism created by crises suggests a desire for destruction. Does humanity need this kind of negativity, and are we merely passengers on a kind of «Titanic»?

Here at «GIFAS», we experience this somewhat differently. The times are also very challenging for us and not everything always goes smoothly. We learn from this every day, trying to keep the wheel balanced and steer it in a positive direction.

Our credo is to constantly question ourselves, act with foresight, and not let ourselves be consumed by negativity because even small steps can achieve a lot and, in many cases, great things.

More uplifting reports, even if only minor, would enrich the daily news flow. Here's a small step towards that – the latest edition of GIFAS News offers a lot of useful information about our daily activities.

Yves Rödiger, CEO

Legal notice

GIFAS-NEWS will be published periodically

Editor
GIFAS-ELECTRIC GmbH
Dietrichstrasse 2
CH-9424 Rheineck

Editorial office, concept and design
GIFAS-ELECTRIC GmbH
Nicole Gasser & Nicole Lang

A bridge that connects – functionally and aesthetically pleasing



Passarella Torretta Bellinzona

Bridges are more than just a part of our infrastructure or a functional link. Often we stand in amazement on or in front of a bridge and look down or at the surrounding landscape.

Increasingly, the infrastructure in urban areas is also being improved and expanded for non-motorised traffic. Bridges are well suited for this purpose, as they can integrate different means of transport.

The Wow project of the Passarella Torretta bicycle and pedestrian crossing is undoubtedly an excellent example. The new 172-metre-long Passarella was built on the old, existing remains of the Torretta Bridge in a construction period of only ten months.

The crossing is part of the regional cycle route and connects Bellinzona with Monte Carrasso. Pedestrians and cyclists are thus provided with a safe crossing of the Ticino river and the A2 motorway. In addition to the beautiful design of the bridge, importance was also attached to the lighting. On the one hand, safety must be guaranteed at night for all users and on the other hand, this remarkable structure deserves to be visually highlighted even more.

And this is where GIFAS comes in because, as experts, we already have plenty of experience with the installation of lighting projects.

In close cooperation with the electrical planning office of IM Maggia Engineering in Locarno, LED lighting with LaneLED WALL was designed and integrated into the bridge railing on both sides.

A total of 172 metres of LED strips were installed on each side and 35 metres for the spiral staircase. The

result: the design of the spiral staircase and the bridge is impressively highlighted. Top-class illumination with a wow effect – combining safety and aesthetic accents.

Since last autumn, this beautiful structure has been open to non-motorised traffic and is a source of amazement for many visitors.

With our know-how, we can also help you with your lighting project as a partner for planning and delivery.

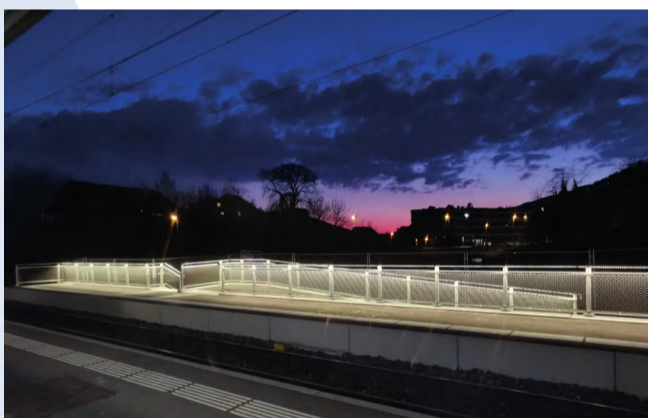


Several other crossings, passages, and subways have been equipped with LaneLED WALL.

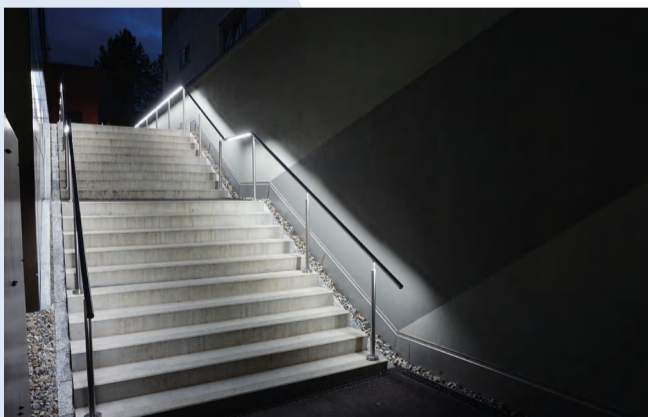
The INOX handrail with integrated lighting provides pedestrians and cyclists with the necessary safety while crossing.



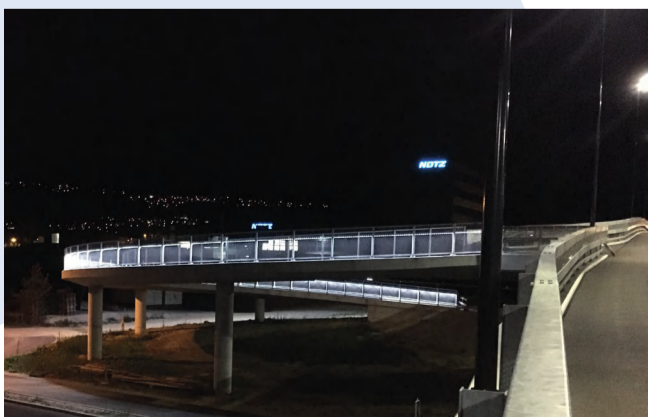
St. Margrethen railway station



MOB Chateau d'Hauteville Vevey railway station



Stairs at Lindenplatz Baden



Bicycle ramp in Biel

Independent of the grid – mobile – reliable on the go with power generators



Is there no power source within a reasonable distance? Whether on the construction site, in areas that are difficult to access or isolated, or simply on the road - with a power generator you are independent and there are numerous possible uses.

Our new range of power generators of the GENNO P-series is suitable for rapid and mobile use. On the construction site, in the event of an emergency, during outdoor activities or at home, wherever there is no power socket or in the event of a power failure.

In the recent past, the keyword energy supply crisis often came up: with the appropriate power generator, you can remain independent and be on the safe side. The power generators of the GENNO type are specially designed for field operation. No matter where, no matter what time, electricity is reliably generated wherever it is needed.

The four models from 5.5 to 12kVA are equipped with Honda's tried-and-tested petrol motors and are approved for mobile use by complying with the STAGE V emissions standard. The robust construction, high mechanical load capacity, and simple handling facilitate fast and straightforward operation. Furthermore, all models have an AVR voltage regulator and insulation monitoring.

Are there no suitable accessories for the power generators?

With our large assortment of connection and coupling cables, power distributors, cable reels, and cable bridges, you are sure to find the ideal product.

Our experienced sales team will be happy to support you in selecting the right product – also on-site.



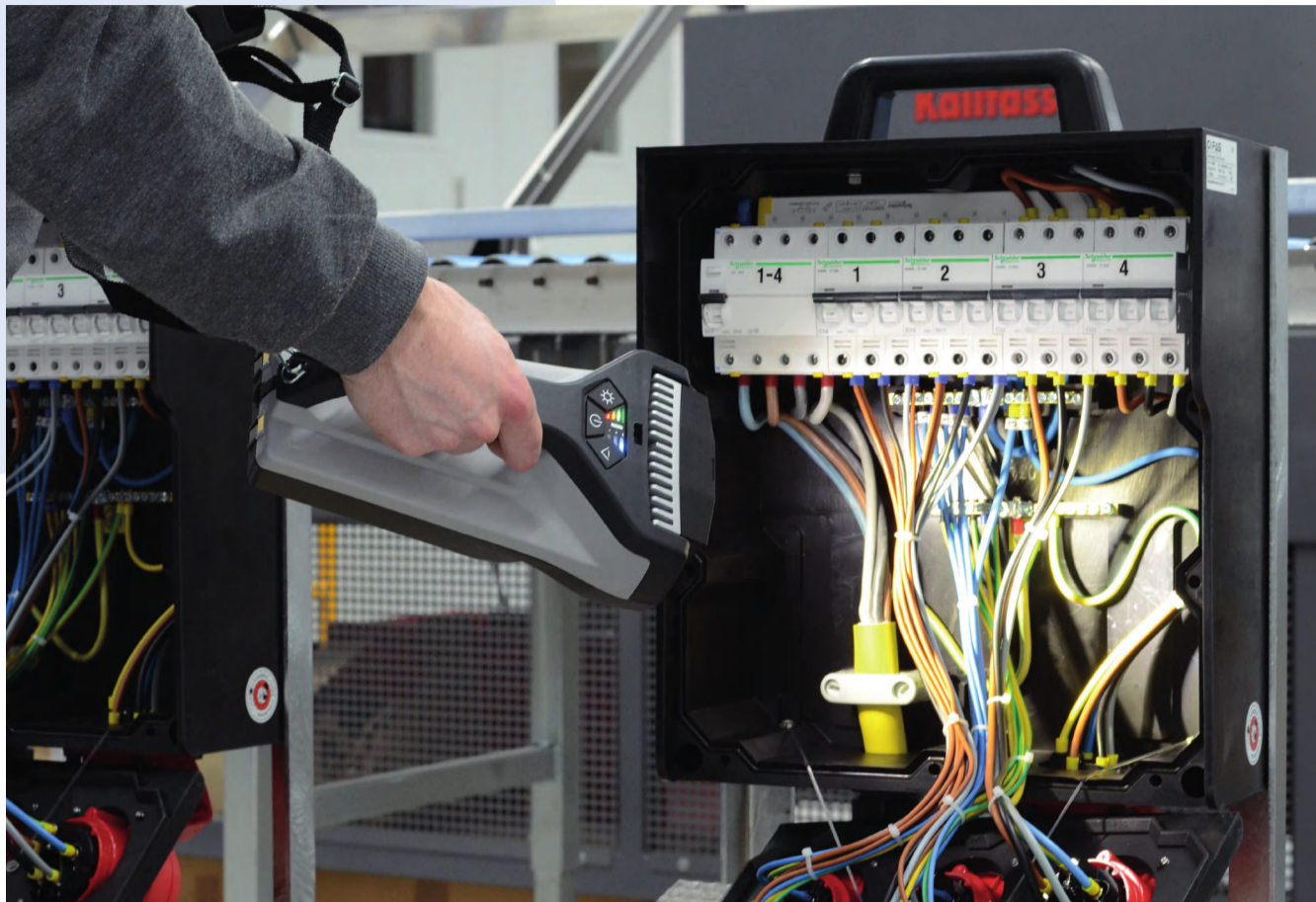
Robust frame with comfortable grip



Simple operation – HONDA motor



Newer, better, brighter: FlashLED 2



The next generation of the proven FlashLED impresses with a new design and more performance.

Since the introduction of the first FlashLED more than ten years ago, the multifunctional work and inspection light has become an indispensable part of everyday working life. The new FlashLED 2 has a modern design, increased functionality and the latest Li-Ion battery technology.

The luminaire head can now be swivelled by up to 125°, allowing the floor to be illuminated while the lamp is in the charging station (emergency operation).

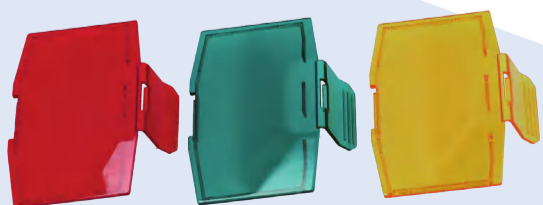
Talking about illumination: Thanks to the latest LED technology, a luminous flux of up to 1250 lumens is achieved.



Five-way charging station

Other features

The integrated USB-C interface provides the option of charging the FlashLED 2 without a charging station. But that's not all: the service tool, which is available free of charge, can be used on a PC to check whether there is an error message or still enough battery capacity.



Three different colour filters

city. If it is necessary to replace it, this will be indicated in the service tool. With the corresponding link, a new battery can be ordered directly and replaced by the user him/herself.

What does not need to be replaced, however, is the charging station. The new FlashLED 2 is 100% compatible with the previous charging station. Upgrading to the latest generation has never been this easy!

An additional plus – the FlashLED 2 is also available as an EX version. More on this – QR code.



FlashLED 2 on charging station, can be swivelled up to 125°

The clock is ticking for the changeover to the new Standard SN 441011



We don't know if you already knew... but the Swiss plug and socket system is being supplemented with the new «IP55 protection class» standard. The transitional period runs until 31.12.2024.

From this date onwards, only products and appliances with plugs and sockets complying with the new SN 441011 standard may be produced, assembled, or installed.

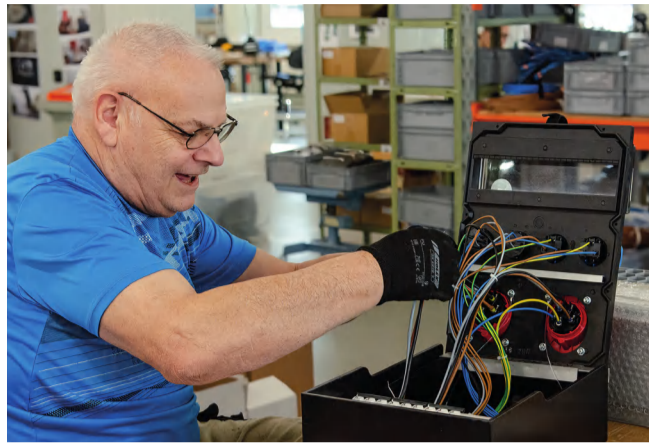
The IP55 protection rating means both dustproof (IP5X) and water-jet proof (IPX5) and reaches IP55 when unused and when plugged in. Wherever increased IP protection (>IP21) is required, i.e. for devices for outdoor use (construction site suitability), for agricultural and horticultural operations as well as for power distributors in general outdoor use (cable reels, construction power distributors, socket strips, etc.), the new SN 441011 standard must already be applied since 1 March 2022.

GIFAS already took action when the standard came into force and has been supplying the corresponding products in accordance with the new requirements and the required labelling since the start of 2022.

The «old» IP54 sockets T13/T23 and T15/T25 can be replaced on a 1:1 basis with the new GIFAS IP55 version, because the drill holes are the same as before.

Obtain information and plan well in advance to ensure the electrical safety of your power supply equipment in everyday working life. Contact us. Our contact persons will be happy to support you in the implementation.

HPV Rorschach – a long-standing partnership unites



HPV Rorschach supports people with disabilities, from childhood to old age, in a holistic sense. They have a right to education, integration, and self-determination. A regulated daily structure with various offerings supports and promotes these needs.

Meaningful employment is also enormously important. Because work means making an active contribution to society and one's own livelihood, HPV provides a wide range of activities in its own large production and service department.

Among other things, the electrical assembly, paint shop, and mechanics departments are important to us.

With the production of GIFAS socket distributors, HPV can offer sheltered workplaces and enable employees to live more appreciative lives. In addition, there is the opportunity to complete Swiss federal vocational training courses with a certificate and practical training courses at apprenticeship centres.

We can highly recommend HPV Rorschach.

We have maintained a valuable partnership with HPV Rorschach for many years. As a regionally established and important institution, it accompanies people with an impairment – with the mission: Educate – Support – Employ.

We have outsourced part of our production there – a win-win situation for both parties.

FlexLED – unrolled – docked and ready



Time is money. This also applies to the construction site, especially when setting up the relevant infrastructure.

This is where our versatile FlexLED rope light scores as temporary lighting. In no time, the LED rope light is unrolled from the cable reel and immediately ready for use.

The double-sided LED strip ensures optimum illumination. Available in 3'000K and 4'000K, it illuminates every corner and shines with a high luminous efficacy of approx. 1'500lumens per metre. Thanks to LED technology, you not only save time but also energy.

The cable reel is equipped with 25m as standard. However, the flexible lighting can be extended to a maximum length of 100metres thanks to the connecting rope light. As an additional variant, there is the FlexLED with 10 metres on a reel – also extendable up to 100metres.

Minor repairs to the LED rope light can be carried out even with the repair kit. And with the optionally available emergency battery pack, you play it safe and remain independent in case of a power cut.



Schweizer Fachmesse für öffentliche Betriebe und Grossunternehmen

The GIFAS team will be there from **6-9 June** and looks forward to seeing you at **Stand D11** in **Hall 2.2**.

Many thanks

Every year, several employees can celebrate a proud anniversary. We celebrate this each time with a shared lunch. Up until June, we can congratulate the following long-serving Gifäslers on a total of 115 years of service with the company:

15 years	Marcio Lopes and Daniel Zwicker
20 years	Bulent Tuncer
30 years	Kurt Bischofberger
35 years	Christian Alig

I would like to take this opportunity to thank everyone for their loyalty and their reliable service. With their many years of commitment, they have contributed significantly to the success of GIFAS – Yves Rödiger.



from left to right: Christian Alig, Yves Rödiger CEO, Daniel Zwicker, Marcio Lopes, Kurt Bischofberger, not on the photo: Bulent Tuncer



GIFAS-ELECTRIC GmbH +41 71 886 44 44
Dietrichstrasse 2 info@gifas.ch
CH-9424 Rheineck www.gifas.ch