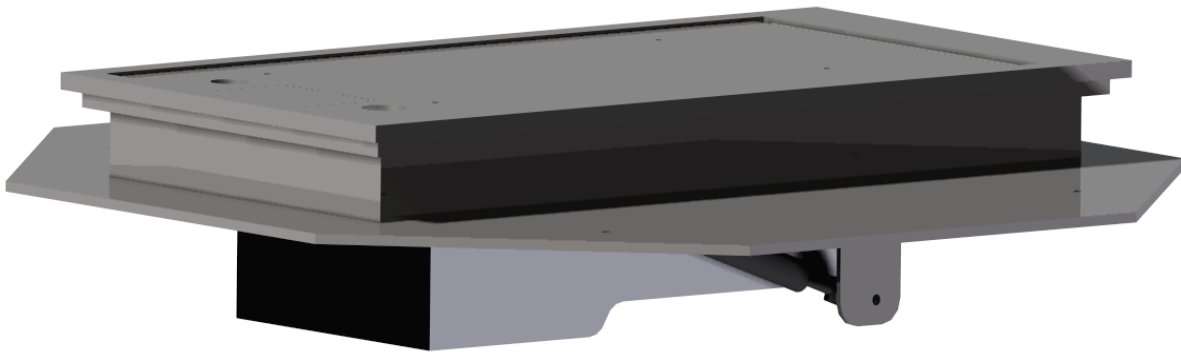


Campetto 7 Underfloor distributor system

Manual



VERSION	MODIFICATIONS
1.0	First edition
1.1	Editorial changes

Table of contents

1	General information.....	3
1.1	Marking concept for hazards and hints	3
1.2	Responsibilities of the operator.....	3
2	Applications.....	5
2.1	Product features	5
2.1.1	Basic features and benefits of Campetto 7:.....	5
2.2	Scope of delivery	5
2.3	Technical information	5
3	Introduction	6
3.1	Installation conditions Campetto 7 Underfloor distributor system	6
3.1.1	Work to be done on site by customer	6
3.2	Connecting underfloor distributor to power supply	7
3.2.1	Principle drawing.....	7
3.3	Example installation Campetto 7 (with reservoir cover)	8
3.4	Storage.....	9
3.5	Disposal of the device	9
4	Service	10
4.1	Serviceadressen.....	10
4.2	Impressum	10

1 General information

1.1 Marking concept for hazards and hints

 **Hazard**

Hazardous situation which will cause serious injury or even death if it is not prevented.

 **Caution**

Hazardous situation which could cause slight to moderate injury if it is not prevented.

 **Hint**

Indicates information which does not concern personal injury, e.g. hints in respect of material damage.

 **Protective measures**

Increase safety by applying a protective measure.

1.2 Responsibilities of the operator

- Make sure that this document is always kept in a safe place in a legible form together with the product.
- Read these instructions carefully before first start-up of the product.
- This product has been developed and produced exclusively for the use indicated in these documents. Every other use, which is not mentioned explicitly, could affect the intactness of the product and/or could constitute a source of danger.
- The manufacturer rejects any liability for damage which has been caused by incorrect or non-intended use of the product.
- In countries, which do not belong to the European Community, the national legal reference regulations as well as the standards and regulations applicable in these countries have to be observed for warranty of a corresponding safety level.
- The installation has to be carried out according to the applicable regulations.
- The manufacturer assumes no liability for inexperienced execution of installation as well as deformations which may occur during operation.
- The electric power supply has to be switched off before executing any action on the installation.
- Exclusively original parts of the manufacturer shall be used for maintenance. Maintenance work may be carried out by qualified staff only.
- All procedures which are not explicitly mentioned by the manufacturer in the instructions are not permitted.
- The packing material must not be stored within the reach of children as it could be a potential source of danger.
- The product must not be installed in hazardous environments. Flammable gases or fumes represent a serious security risk
- Energy supply of the underfloor distributor has to be protected in accordance with applicable regulations and manufacturer's details.
- It must be checked whether the earthing system has been installed properly. The metal parts of the underfloor distributor must be connected to this system.
- If a heating is installed by customer, it is important that the system will be protected by RCD 30mA.
- The manufacturer disclaims any liability with regards to safety and efficient operation of the underfloor distributor if components are used in the underfloor distribution system which were not approved by the manufacturer.
- On no part of the underfloor distributor changes should be made, under no circumstances.

Created	Modified	Object-ID
01.12.2013 ROEN	01.12.2013 ROEN	359749

- The installer has to provide the user with all information relating to the operation of the system.
- Make sure that underfloor distribution systems which can only be operated when they are in open mode, do not provoke any security risk during the operation (risk of unwanted closure of lid, manipulation, e.g.).
- Gas springs are wear parts and must be replaced immediately in case of pressure loss in order to ensure a safe and gradual closing of the cover (accident risk).

Any optional heating system (heating cover, etc.) may be installed only by authorized personnel.

Locking system, lid hinge bar and gas springs should be checked at appropriate intervals for cleaning and greasing.

The contact surface of the lid needs also to be cleaned from dirt in appropriate intervals to ensure a safe closing.

Bolts which are loose (by transport or installation e.g.) should be tightened.

Created	Modified	Object-ID
01.12.2013 ROEN	01.12.2013 ROEN	359749

2 Applications

GIFAS underfloor distributor systems are suitable for:

- Community and market places,
- warehouses, exhibition halls and trade fairs
- Hangars,
- Sport and leisure centres, parks,
- Pedestrian walkways and parking lots
- Shopping centres,
- Plants,
- etc.

... Electricity everywhere, where it is needed quickly, comfortably and regularly!

2.1 Product features

2.1.1 Basic features and benefits of Campetto 7:

- Open casing frame that fits standard concrete pipes
- Cover made from chequered plate
- Cover closed during operation
- low installation depth
- robust, easy and safe to operate
- variety of sizes and distributor models
- low maintenance costs
- highest operational security by GIFAS hard rubber distributor boxes
- resistant to environmental conditions

Size, depth, cover thickness and equipping of the distributor box depend on the customer's specific requirements.

2.2 Scope of delivery

The Campetto casing including the electrical distribution and junction box are delivered ready-to-install. Cabling, filling with concrete, drainage e.g. has to be provided by customer.

2.3 Technical information

- designed for electrical, water, and compressed air connections
- the GIFAS hard rubber distributor box assembled on the cover can be equipped individually with any material
- the built-in connector is adjusted for the connection values and is attached to the frame mount
- the power supply can also be connected directly to the GIFAS hard rubber distributor box using a flexible cable
- the Campetto cover is available in different load capacities (standard B125, special versions up to class C250 possible)
- model in V2A stainless steel (galvanized ST37 on request)
- simple and rapid opening and closing supported by gas spring

Created	Modified	Object-ID
01.12.2013 ROEN	01.12.2013 ROEN	359749

3 Introduction

To ensure proper installation, the following steps and notes must be complied with under all circumstances. Only this way can it be ensured that the product will work to complete satisfaction.

i Hint

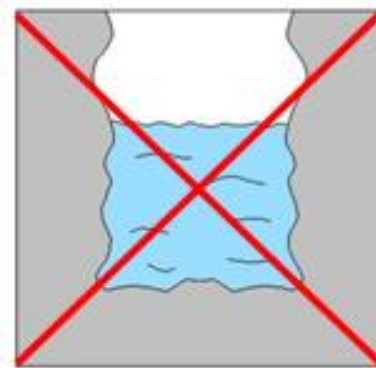
Read all instructions before starting installation. Our sales department will be happy to answer any questions you may have.

3.1 Installation conditions Campetto 7 Underfloor distributor system

3.1.1 Work to be done on site by customer

The cover system is not sealed against surface water; this means that the customer must provide for the drainage of the underfloor distributor system. The customer must therefore ensure that an appropriate drainage line or drainage system is installed.

without drainage/drain pipe



With drainage bed (e.g. loose subsurface)

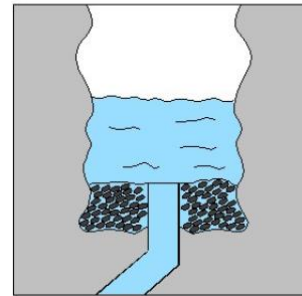


with drain pipe (e.g. solid subsurface)



Check drainage capacity!

40L in 30 min.



The excavation work as well as the professional and standards-compliant installation must be performed by the customer. It is important to ensure that the load capacity of the foundation and/or the cover layer corresponds to the load capacity of the underfloor distributor system in order to prevent subsidence. Delivery of concrete pipe has to be done on site by the customer.

⚠ Caution

If the Underfloor distributor system is to be used immediately after the excavation work, the installation pit must absolutely be secured or locked so that it does not pose a safety risk!

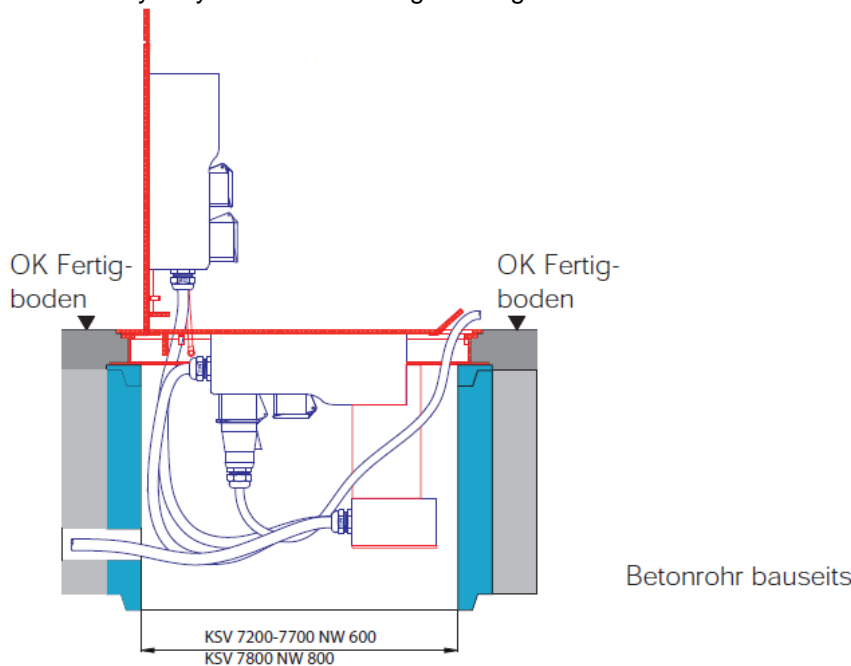
3.2 Connecting underfloor distributor to power supply

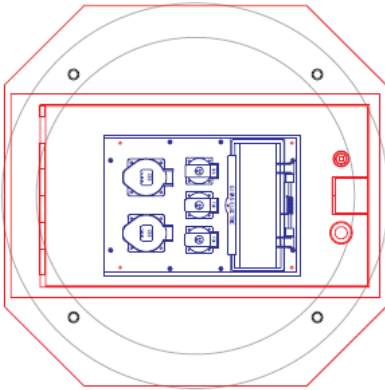
⚠ Caution

The electrical connection may only be made by trained personnel and is the responsibility of the operator.

3.2.1 Principle drawing

The details necessary for proper installation can be found on the project-specific drawing from GIFAS. Custom models may vary from the following drawings.





The cover opens automatically through the use of gas springs. They support muscular force and allow for the controlled opening and closing of the cover.

3.3 Example installation Campetto 7 (with reservoir cover)

Insert concrete pipe and ensure drainage



Feed electrical supply cord through concrete pipe



Install underfloor distributor system



Use the levelling bolts to precisely align the Underfloor distributor system with the surface



Cleanly fill in underneath the Underfloor distributor system to prevent subsidence



Fill the reservoir cover



3.4 Storage

No additional measures are required for storage. With regard to packaging, pay attention to protection against damage.

3.5 Disposal of the device



This product must not be thrown in the garbage.

In accordance with official local and national regulations, this product is to be recycled appropriately.



European directive 2012/19/EU; waste electrical and electronic equipment (WEEE).

4 Service

4.1 Serviceadressen

GIFAS ELECTRIC GmbH Borsigstrasse 9 D-41469 Neuss	GIFAS-ELECTRIC S.r.l Via dei Filaracci 45 Piano del Quercione I-55054 Massarosa (LU)	GIFAS ELECTRIC GmbH Pebering-Straß 2 A-5301 Eugendorf	GIFAS-ELECTRIC GmbH Dietrichstrasse 2 Postfach 275 CH-9424 Rheineck
☎ +49 2137 105-0 📠 +49 2137 105-230 🌐 www.gifas.de ✉ verkauf@gifas.de	☎ +39 58 497 82 11 📠 +39 58 493 99 24 🌐 www.gifas.it ✉ info@gifas.it	☎ +43 6225 7191-0 📠 +43 6225 7191-561 🌐 www.gifas.at ✉ verkauf@gifas.at	☎ +41 71 886 44 44 📠 +41 71 886 44 49 🌐 www.gifas.ch ✉ info@gifas.ch

4.2 Impressum

GIFAS-ELECTRIC GmbH
CH-9424 Rheineck
www.gifas.ch

Technische Änderungen und Irrtümer vorbehalten.

Dieses Dokument ist Eigentum der GIFAS-ELECTRIC GmbH und darf ohne vorherige schriftliche Genehmigung durch GIFAS-ELECTRIC GmbH weder ganz noch in Auszügen kopiert, übersetzt, übertragen, dupliziert oder an Dritte weitergegeben werden.