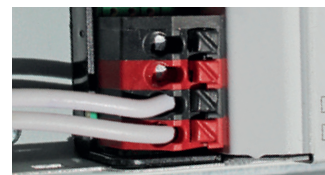
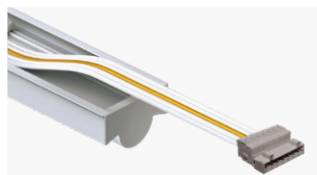
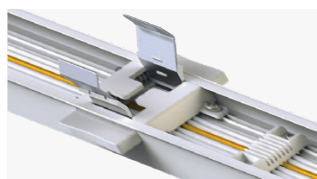
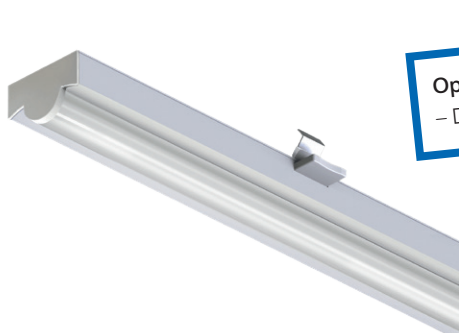


## LineLED Modular

for retrofitting standard continuous-row lighting systems



Whether for production facilities, warehouses or sales areas - with the universal LED continuous-row lighting module, you can refurbish existing standard single and double-lamp T5 and T8 trunking in a future-proof way and adapt it precisely to your lighting requirements. Depending on requirements, the colour temperature (3'000K-5'000K) and output can be selected using a slider, allowing maximum flexibility. The constant light output (CLO) ensures a consistently high light level over the entire service life.

Quick and tool-free installation and removal is achieved using the click-slide system, which saves valuable time. The simple click-locking system is compatible with almost all continuous-row luminaire manufacturers and enables retrofitting by just one person.

### Product features

- simple installation and removal thanks to click-slide system
- selection of light colour via slider on the luminaire
- soft start and automatic luminous flux adjustment (CLO)
- tool-free phase change via slide control
- 7-stage power regulation from 25-75 W via DIP switch
- fully integrated, independent through-wiring
- integrated fall protection
- compatible with many common trunking rails
- compatible with the following manufacturer series:  
AEG (MAXOS), Fluolite (TRX/TRZ), LITE Licht (Q-Rail/TS), Philips (MAXOS, TTX200/TTX400), Regiulux (SDT/SPT/SMT), RIDI (VLT/VLG/SLG), Siteco (DUS/Modario), VEKO (PNR), Trilux (E-Line), Zumtobel (Z×1/Z×2)

### Technical data

Input voltage:	230 VAC
System performance (7-step-adjustable):	25 W - 75 W
Luminous flux:	
- 75 W:	11'495 - 12'298 lm
- 65 W:	10'050 - 10'847 lm
- 60 W:	9'458 - 10'095 lm
- 55 W:	8'865 - 9'343 lm
- 45 W:	7'224 - 7'679 lm
- 35 W:	5'661 - 6'037 lm
- 25 W:	4'100 - 4'340 lm
Light colour (adjustable):	3'000 K / 4'000 K / 5'000 K
CRI:	Ra > 80
Beam angle:	120°
Operating life LED:	80'000 h L80 B10 (Ta 25°C) 60'000 h
Protection category:	IP20
Protection class:	I
Operating range of temperature:	-20°C to +50°C
Material housing:	aluminium
Housing colour:	white RAL 9003
Weight:	~1.6 kg
Dimensions:	1'527 × 65 × 50 mm

### Assortment

**861126** ✓ LineLED Modular, 230 VAC, adjustable: 25 W - 75 W (4'100 - 12'298 lm); 3'000 K / 4'000 K / 5'000 K

### Accessories/spare parts

**861128** ✓ Blind cover vor LineLED Modular, aluminium white, 1'527 × 65 × 20 mm

**861129** ✓ Feeding for LineLED Modular (plug with quick-release terminals), wiring 5 × 2.5 mm<sup>2</sup>

**861130** ✓ Connection cable 1.5 m for LineLED Modular, plug on both sides, wiring 5 × 2.5 mm<sup>2</sup>

**861127** ✓ Connection cable 3 m for LineLED Modular, plug on both sides, wiring 5 × 2.5 mm<sup>2</sup>

