

09 28  
DETAILED CATALOGUE

## LaneLED WALL ECO

LIGHTING SOLUTIONS

V0925

# Introduction

---

## Continuous evacuation lighting system for road tunnels

---

LaneLED WALL ECO evacuation lighting system is a continuous lighting system that can be mounted on concrete walls, concrete barriers, in rock tunnels and around emergency exit doors. When switched on it provides a bright LED line all along the tunnel wall, helping the people to evacuate from the tunnel in case of an incident (fire, smoke etc.).

The evacuation lighting system is following the demands of «Nordiskt Möte för Förbättrad vägutrustning» (Nordic cooperation group in the field of road equipment) as specified in the specification «NMF01:2021 LED luminaires».

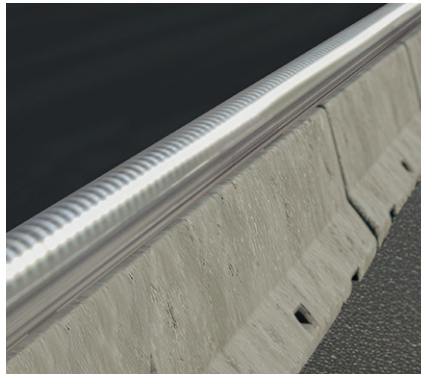
Main focus of LaneLED WALL ECO is on the easy and quick installation without tools (plug-and play) as well as the cost-optimized components. The lighting system comes with a static, continuous white LED strip which is switched on in case of an incident (normally off). One segment is equipped with 125m LED strip which is fed from both ends (48VDC), providing an average luminous flux of 200 lumen/m.

The same lighting system can also be used to mark exit doors with a green LED strip (always on).

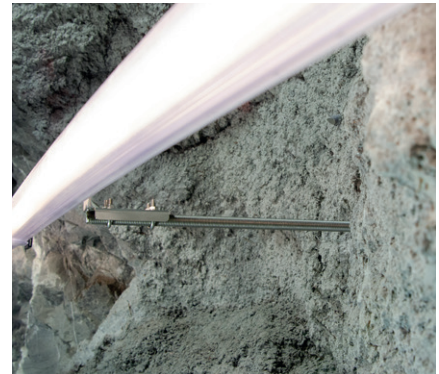
LaneLED WALL ECO is complementing our LED guidance/evacuation LED point lights where we are Swiss market leader since more than 20 years. This product is also in line with our LaneLED GFK self-rescue handrail lighting system for railway tunnels where GIFAS was among the first who have provided a complete and integrated continuous lighting solution.



concrete wall (smooth surface)



top mounted on concrete barrier



rock tunnel (rough surface)

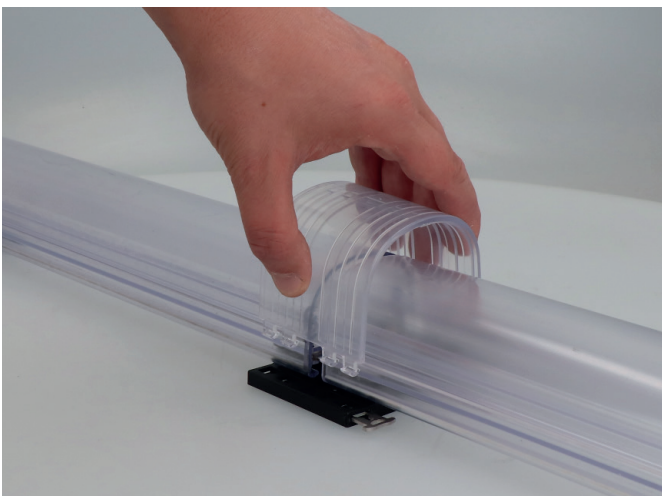
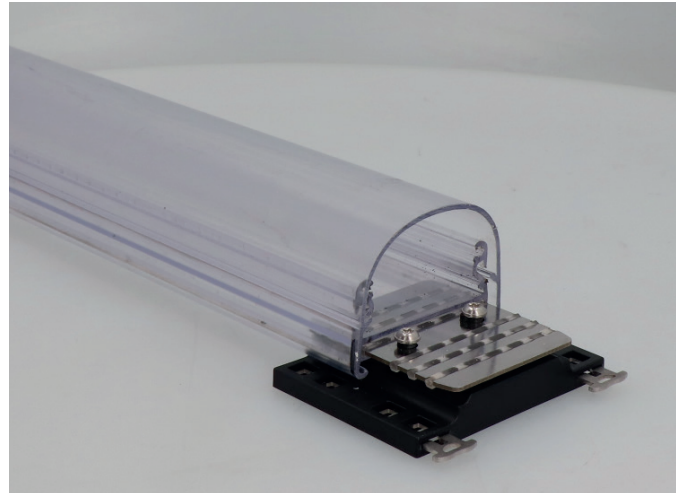
## Toolless concept

---

LaneLED WALL ECO comes with a LED strip and the modular housing where the LED strip is clicked in. The LED strip has a standard length of 62.5 m ( $2 \times 62.5 \text{ m} = \text{max. } 125 \text{ m}$ ) and is equipped with plugs/sockets on each end.

The housing consists of a LED strip carrier profile (6 m or 3 m standard length), which comes with 4 longitudinal sealings. Connection of the carrier profiles is done with a profile connector which is placed every 6 m or 3 m.

Once the LED strip is clicked into the carrier profile, the cover profile (3 m or 6 m standard length) is snapped on and sealed with a cuff which is plugged and locked on the profile connector. The locking is done with 2 sliders.



### Benefits

---

- robust and long lasting design
- different mounting methods (direct on wall or with rockbolts)
- quick installation (easy to cut, plug-and-play)
- few components
- halogen free
- no soldering
- segment length up to 130 m (48VDC power supply on both ends)
- safe also in case of an accident due to extra low voltage (48VDC)
- easy to maintain and repair in case of damage (e.g. due to accidents)
- resistant to cleaning agents and rotating brushes
- support from GIFAS during design, installation and operation



# Technical data

---

## Mechanical

---

Protection category:	IP66/69 K (LED strip IP67)
Impact resistance:	IK08
Materials:	Cover front/back: Polycarbonate Endcaps: Polycarbonate Profile connector: PA66/stainless steel (back) PC/TPE 2 K (cuff)
Mounting brackets:	stainless steel 1.4404 (AISI 316)
Profile length:	6'000mm/3'000mm
Max. bending radius:	see page 10
UV resistant:	yes
Chemical resistant:	yes, to common cleaning agents
Flammability:	UL94-V0
Halogen-free:	yes

## Electrical

---

Voltage:	Input: 230 VAC / Output: 48 VDC
Protection class:	III
Segment length:	max. 130 m (feeding from both ends)
Power / m:	3W/m

## Lighting data

---

### White (along tunnel):

Colour temperature:	white, 4'000 K (+/- 200 K)
Light output LED:	120°
Luminous flux @48VDC:	200 - 250 lm (min 180 lm), depending on segment length
Lifetime:	100'000 h L80
Function:	on/off (no dimming)

### Green (exit door frame):

Colour temperature:	green, 520 nm
Light output LED:	120°
Luminous flux @48VDC:	470 lm
Lifetime:	100'000 h L80
Dimming:	yes (PWM), feeding from one side only
Function:	– normal situation: constantly lit, 235 lm – in case of incident: blinking with 0.5 Hz, 470 lm

## Standards

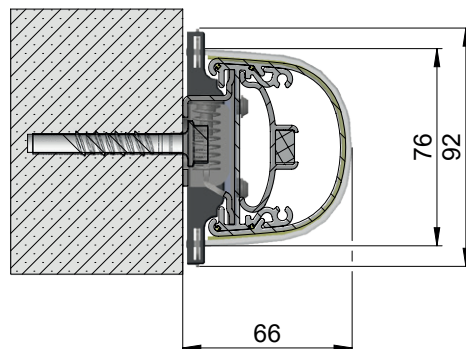
---

In compliance with:	– NMF01 – Sv HB 500 / 601 – EN 60598-2-22 – EN 55015 – EN 61547 – EN 55032
---------------------	---

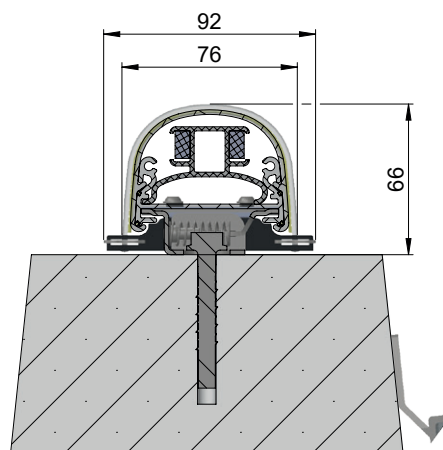
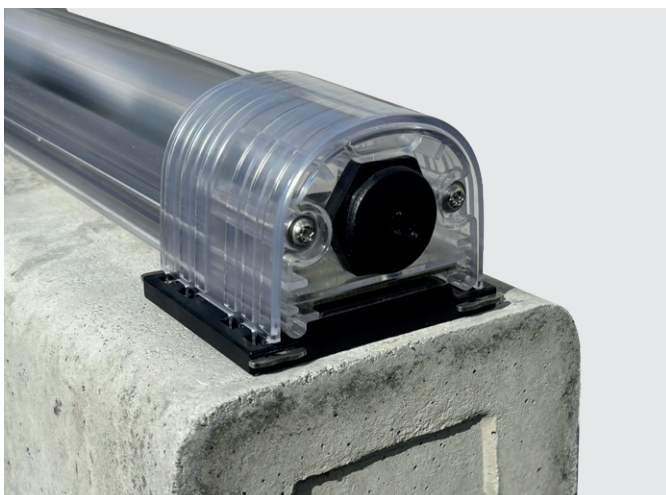


# Mounting options – overview

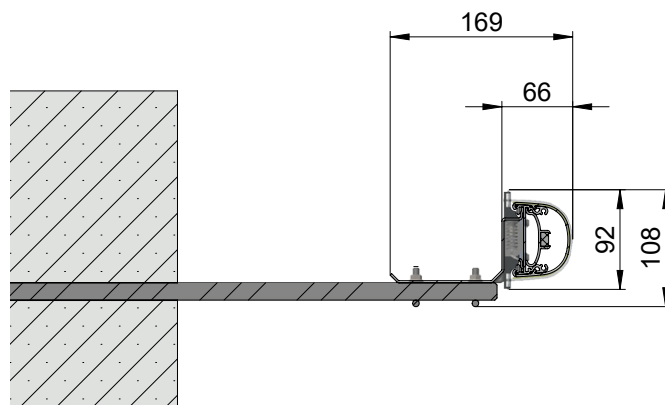
Wall mounting on smooth surface (details on page 6)



Top mounting on smooth surface (details on page 7)

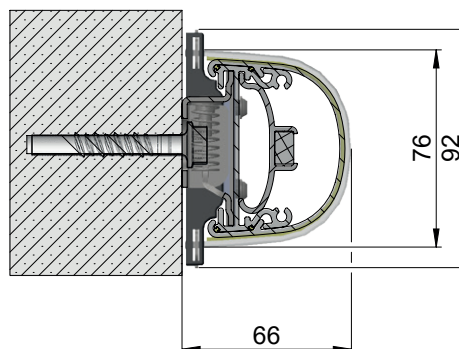


Mounting with rockbolts (details on page 8)

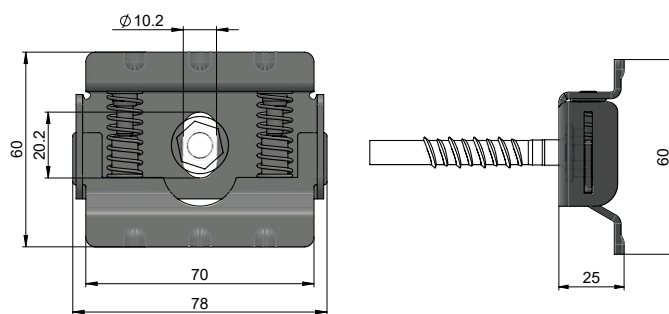


# Wall mounting on smooth surface

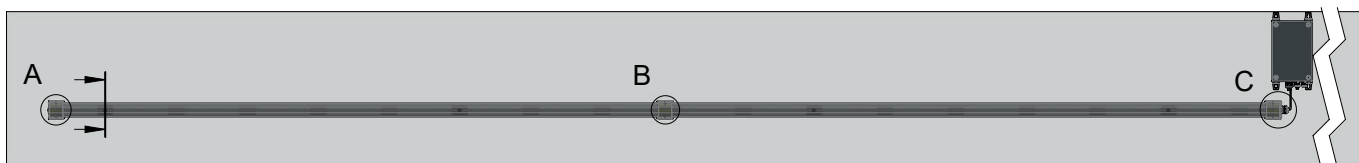
## Mounting situation



## Mounting bracket (distance: max. 1'750 mm)



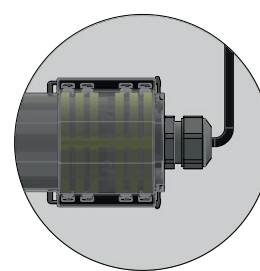
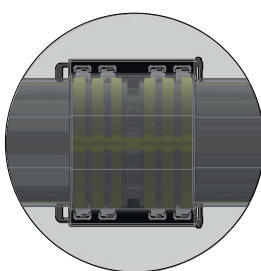
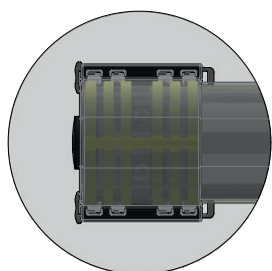
## System structure



Endcap (A)

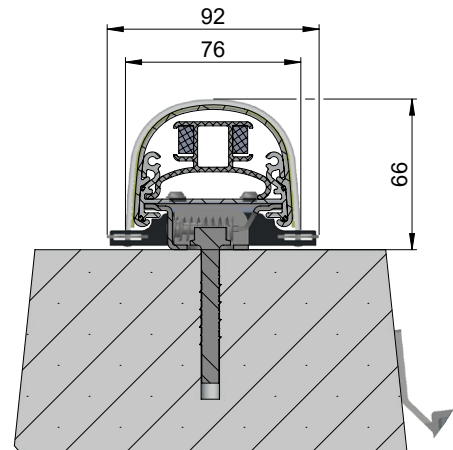
Profile connector (B)

Cable entry (C)

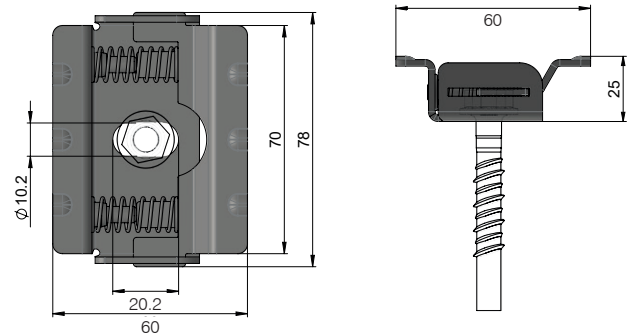


# Top mounting on smooth surface

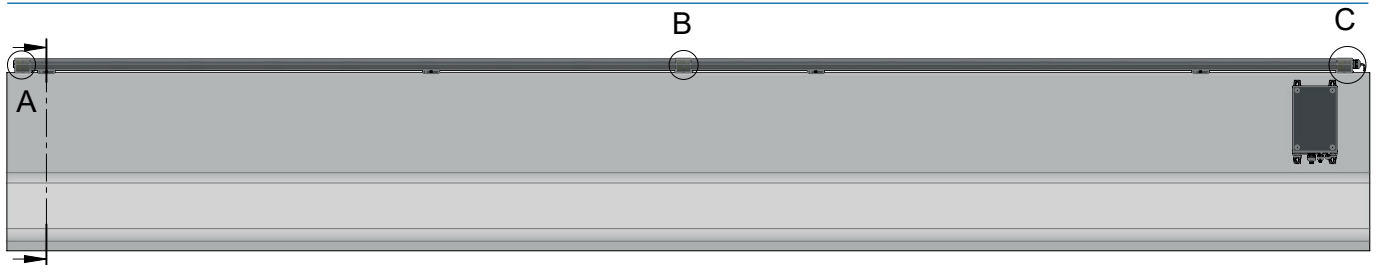
## Mounting situation



## Mounting bracket (distance: max. 1'750 mm)



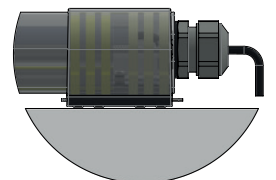
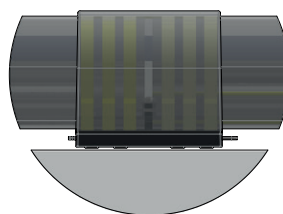
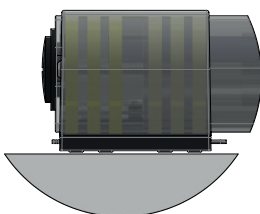
## System structure



Endcap (A)

Profile connector (B)

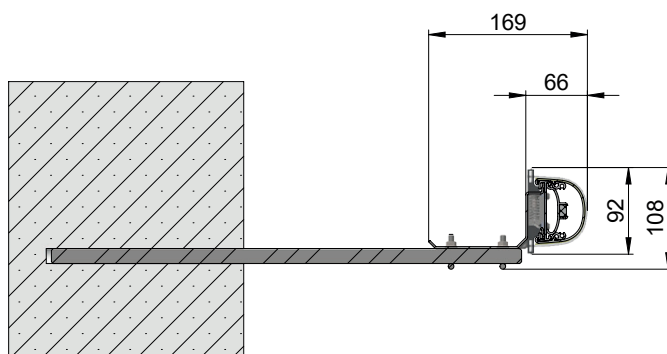
Cable entry (C)



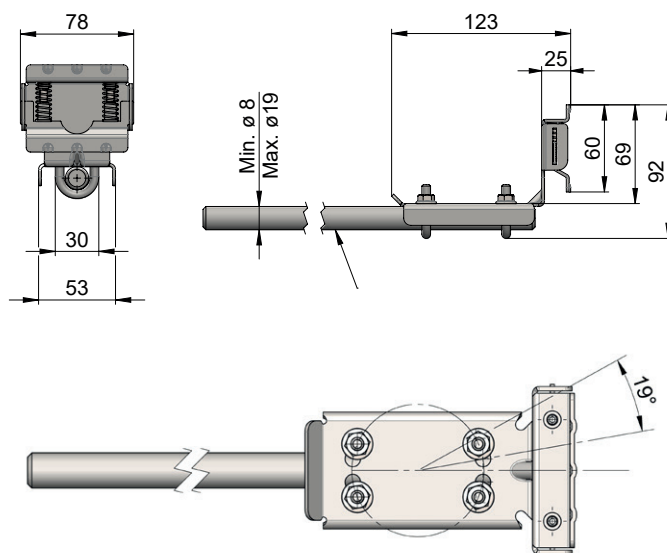
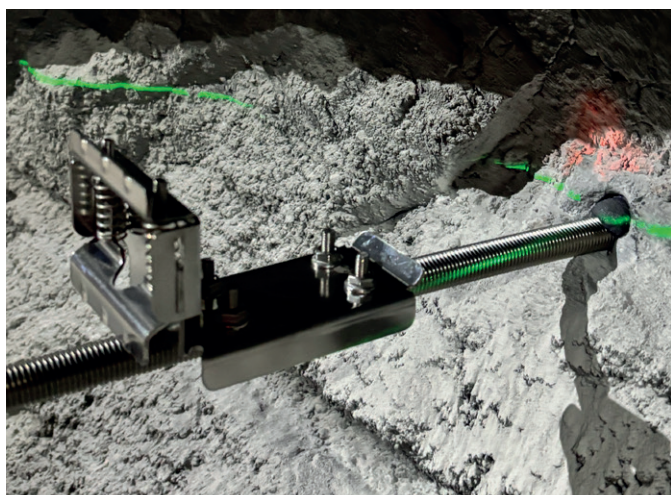


# Rock bolt mounting (rough surface)

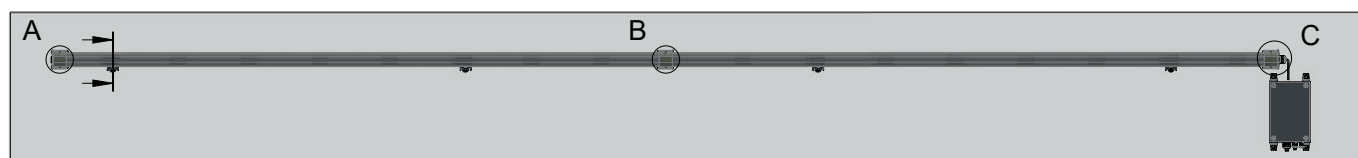
## Wall mounting with rockbolts



## Mounting bracket (distance: max. 1'750 mm)



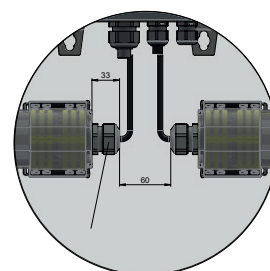
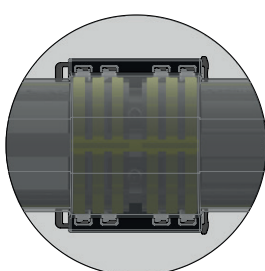
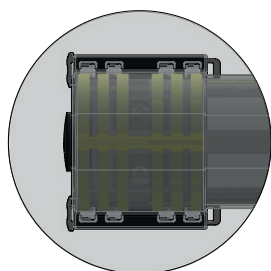
## System structure



Endcap (A)

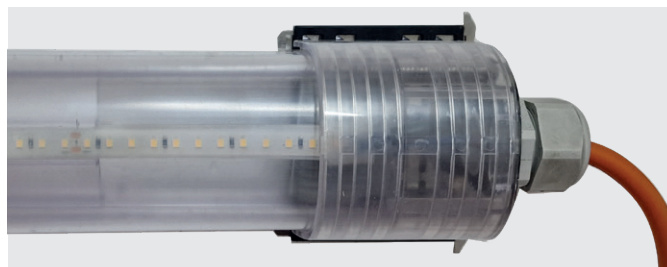
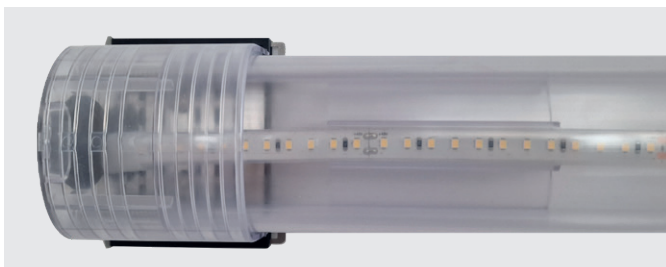
Profile connector (B)

Cable entry (C)

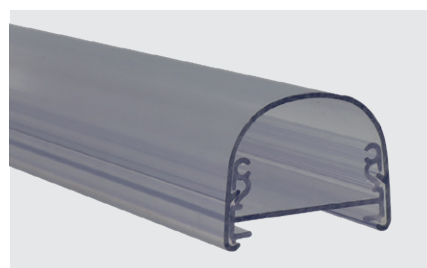
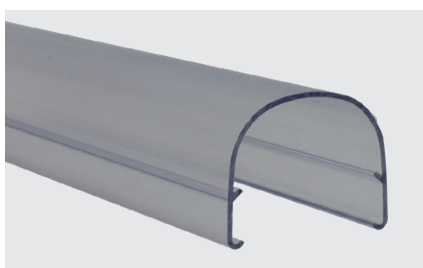
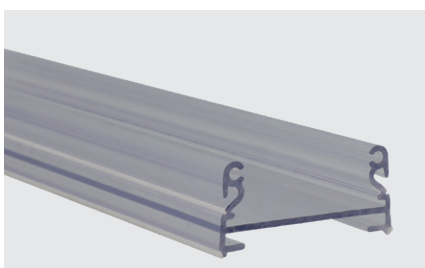


# Components – overview

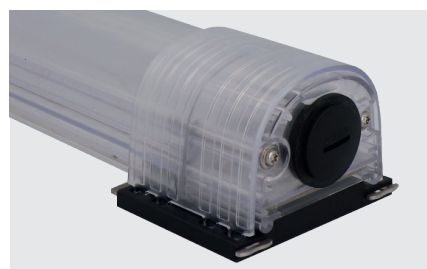
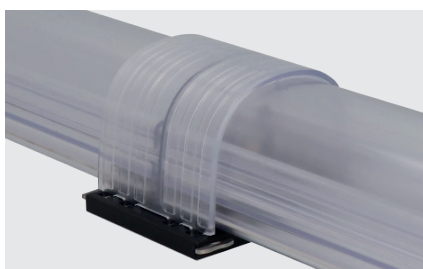
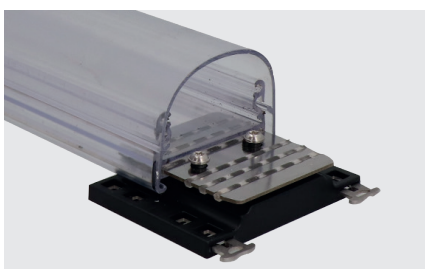
LaneLED WALL ECO consists of the LED strip (total length max. 130m), the modular housing (3m or 6m), the stainless steel mounting brackets as well as the power supplies.



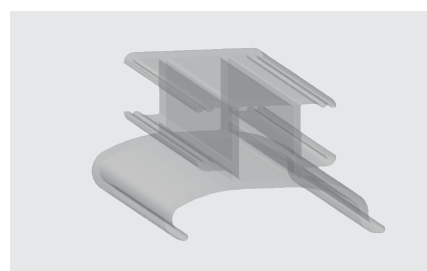
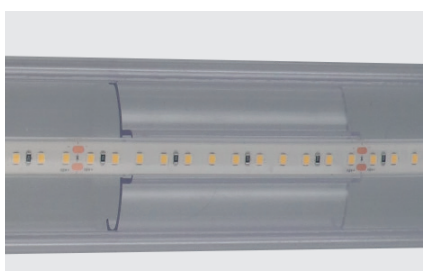
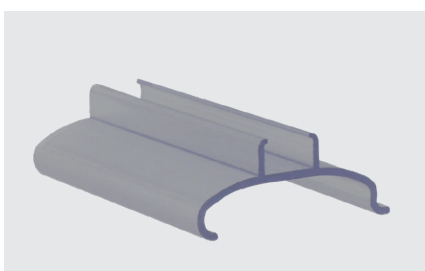
## Modular housing (3m/6m)



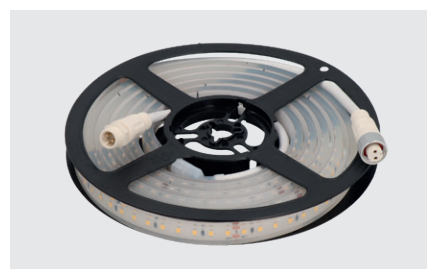
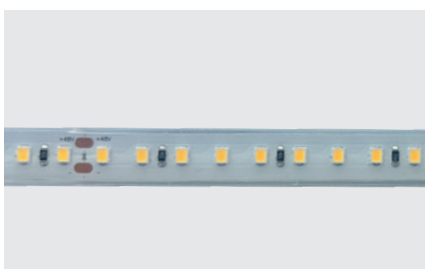
## Profile connector



## Holder LED strip



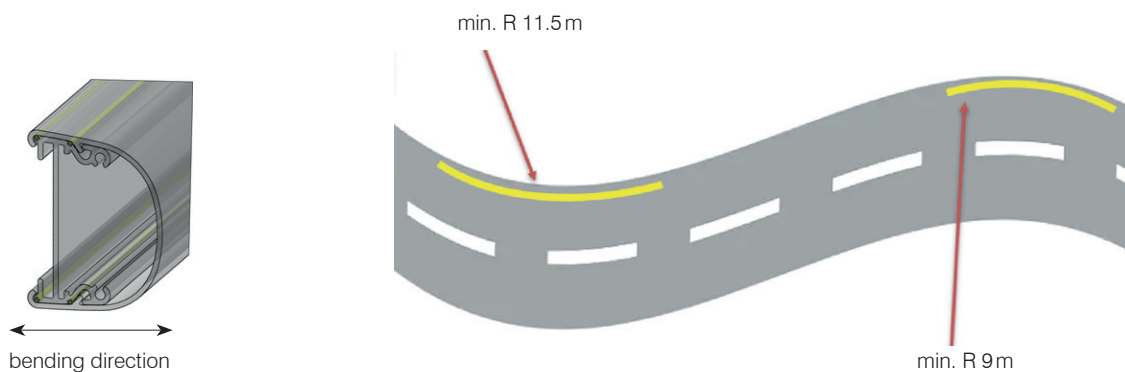
## LED strip – (various length)



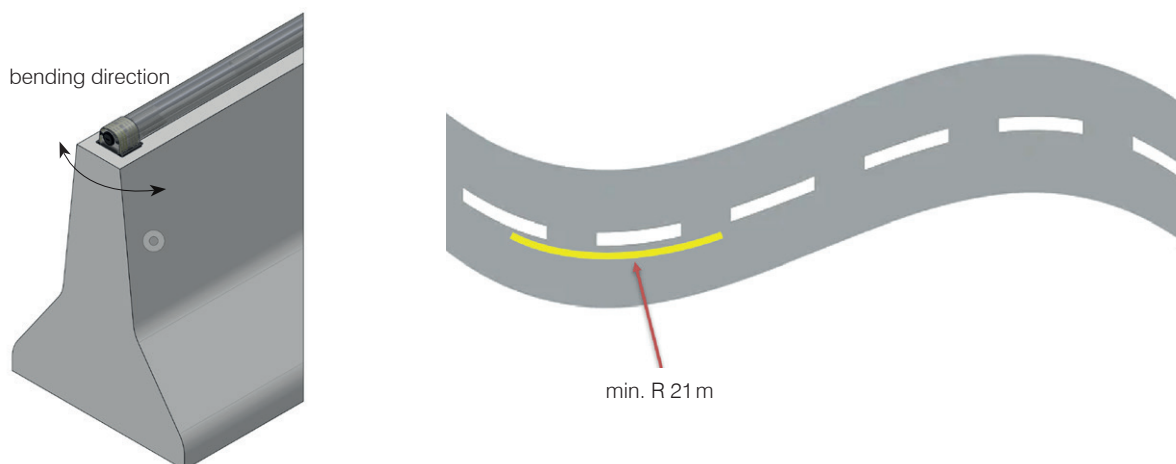
## Curves – bending radius

Following bending radius can be realised:

### Wallmounting (on smooth and rough surface)



### Topmounting



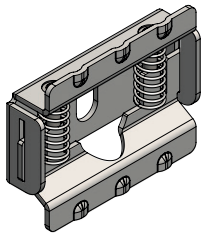
In case more bending is necessary (e.g. 90° corners), there is a flexible "corner kit" available (consisting of 2 endcaps, 2 fixing brackets and a transparent, flexible hose):



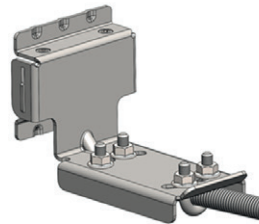


# Article overview

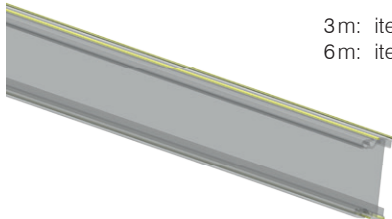
## Mounting bracket «smooth surface», item no. 861920



## Mounting bracket «rockbolt», item no. 861924

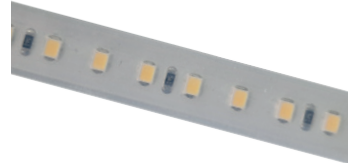


## Carrier profile



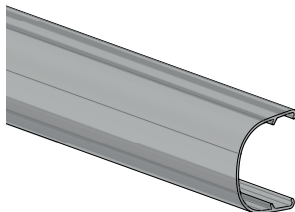
3m: item no. 861951  
6m: item no. 861257

## LED strip



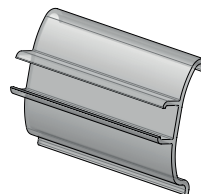
62.5m: item no. 861949  
25m: item no. 861956  
3m: item no. 861957  
1m: item no. 861964

## Cover profile

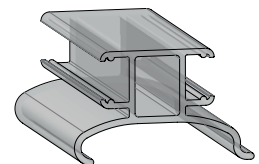


3m: item no. 861952  
6m: item no. 861258

## Holder LED strip

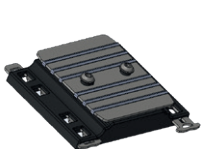


Item no. 861259

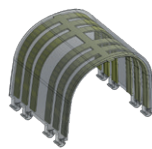


Item no. 861914

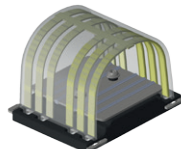
## Connector with cuff



Item no. 861959

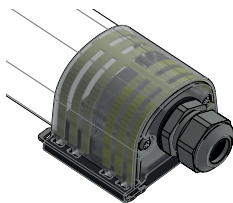


Item no. 861912



assembled

## Endcap set «cable gland M25», item no. 861960



feed-in: M25

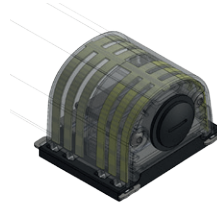


gel box

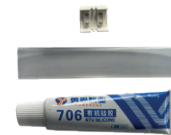


2×connector (4 mm<sup>2</sup>)

## Endcap set «blind cover», item no. 861961

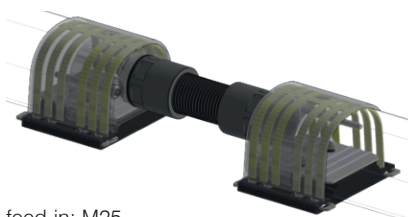


feed-in: M25



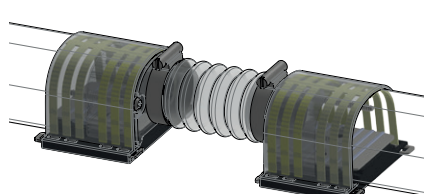
LED strip connection set

## Corner-Set «Agro conduit», item no. 861963



feed-in: M25  
length tube: 170 mm

## Corner-Set «transparent», item no. 861962



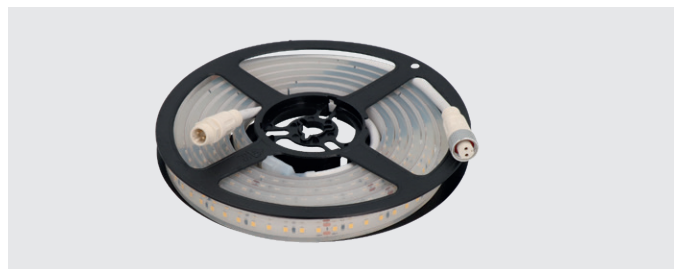
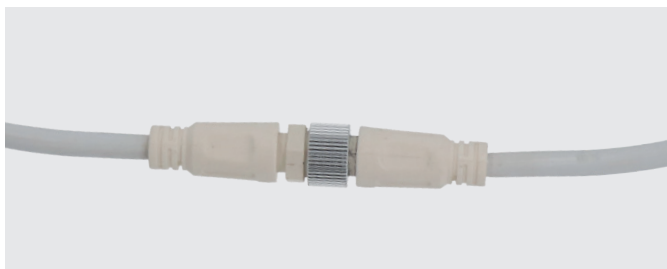
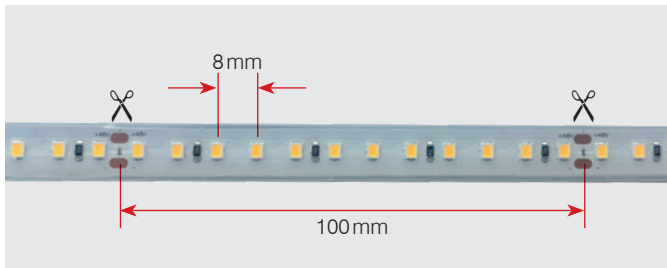
feed-in: M25  
length tube: 75 mm

# LED strip

The 48 VDC LED strip comes in 4 standard length: 62.5 m, 25 m, 3 m and 1 m. Each LED strip is equipped with IP67 connectors on both ends. The LED strip can be cut every 100 mm and be reconnected with the LED strip connection set.

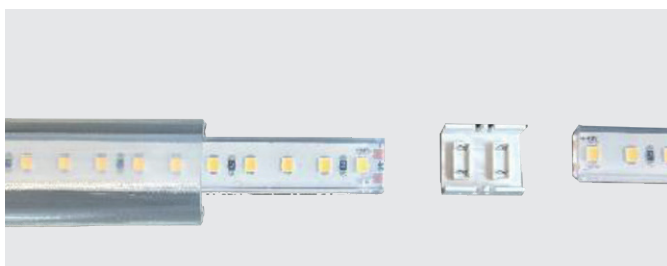
Voltage:	Input: 230 VAC / Output: 48 VDC
Segment length:	125 m (2×62.5 m), max. 130 m
Colour temperature:	4'000 K
Protection category:	IP67
Protection class:	III
Length:	62.5 m (item no. 861949), 25 m (item no. 861956), 3 m (item no. 861957), 1 m (item no. 861964)
Width:	12 mm
Cable length:	150 mm + connector
Power/m:	3 W/m
Distance of LED's:	8 mm
Cuttable segments:	every 100 mm

## LED strip – (various length)



## LED strip connection set, item no. 265152

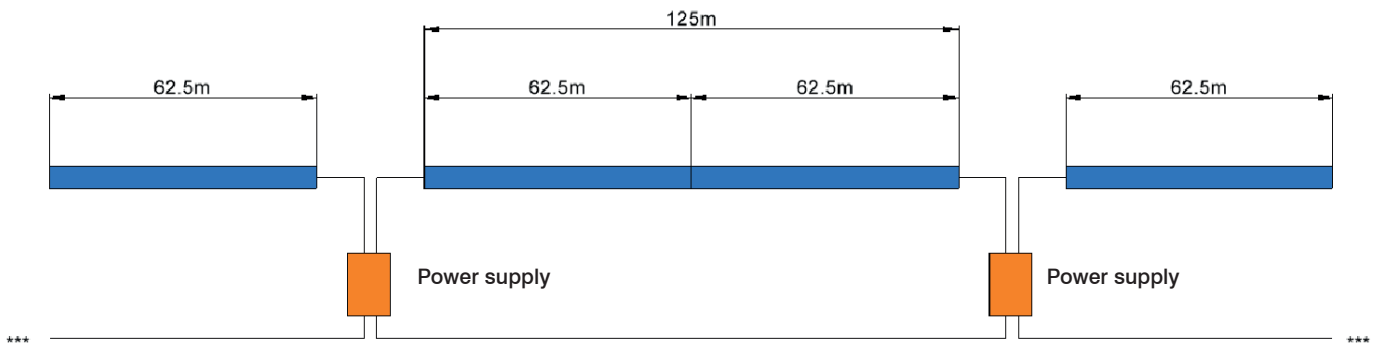
LED strips can be cut to adjust the length. After cutting, LED strips can be reconnected with the LED strip connection set.



# Power supply

The LED strip is connected to the power supply on both ends. Max. segment length is 130 m. In case of failure of one power supply, the segment will still be lit, but on a reduced level.

Function: on/off  
 Luminous flux @48VDC: 200-250 lm (min 180 lm), depending on segment length  
 Segment length: max. 130 m (feeding from both sides)



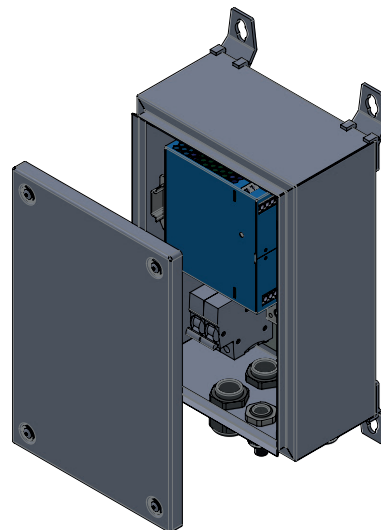
## LED driver, item no. 262391

- LED driver for integration in existing cabinets
- input voltage 230VAC/48VDC
- power 240W
- for DIN rail mounting
- suitable for redundant operation
- dimensions 116×125.2×40 mm



## Power supply cabinet, item no. 861945

- housing made of stainless steel (AISI 316)
- 4 brackets for wall mounting
- 2×LED driver 240W (item no. 262391)
- degree of protection: IP66
- impact resistance: IK08
- cable glands:
  - 3×M20 (cable ø 6-12 mm),
  - 2×M25 (cable ø 13-18 mm)
- dimensions 200×300×135 mm



For more details ask for the technical data sheets and electrical diagram.

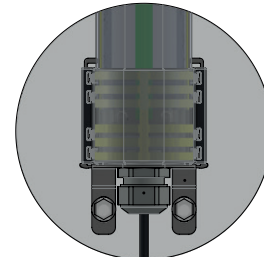
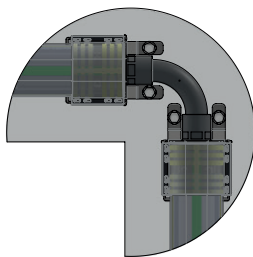
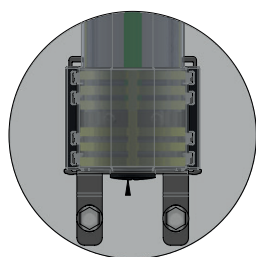
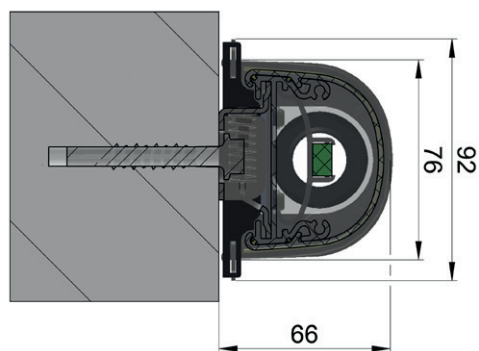
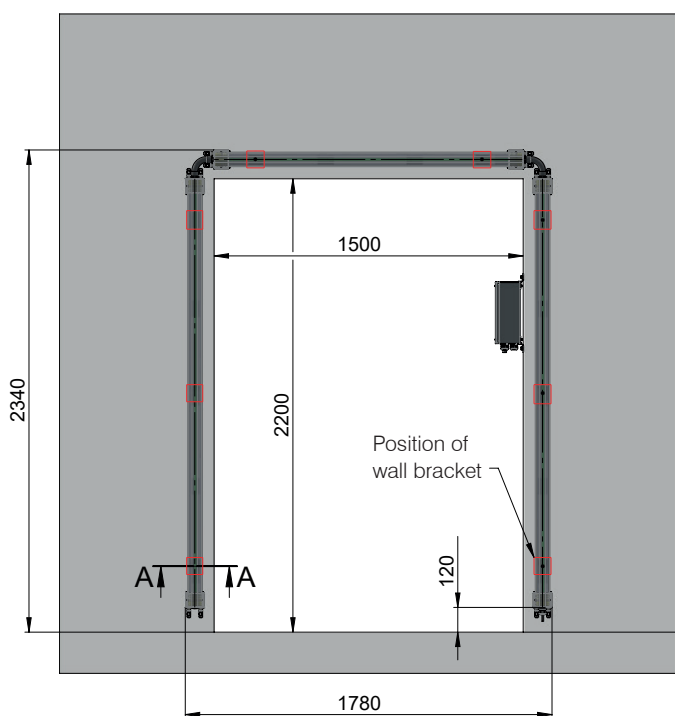


## Exit door marking

Door marking kits are produced tailormade for the specific project.



Exit door marking, item no. 265271



Tailormade proposals are available on request.

# Exit door marking

## Electrical

Voltage:	Input: 230VAC / Output: 48VDC
Protection class:	III
Power/m:	3W/m

## Lighting data

### Green (exit door frame):

Colour temperature:	green, 520 nm
Light output LED:	120°
Luminous flux @48VDC:	max. 470 lm
Lifetime:	100'000 h L80
Dimming:	yes (PWM), feeding from one side only
Function:	<ul style="list-style-type: none"><li>– normal situation: constantly lit, 235 lm</li><li>– in case of incident: blinking with 0.5 z, 470 lm</li></ul>

### Control unit «Digital Input», item no. 861948

Stainless steel cabinet (AISI 316), with:

- LED driver 240V
- blinking relay 0.5 Hz
- degree of protection: IP66
- impact resistance: IK08
- dimensions: 200×300×135 mm
- cable glands: 4×M20 (cable Ø 6-12 mm)  
2×M25 (cable Ø 13-18 mm)

Function:

- normal situation: constantly lit, 235 lm
- in case of incident: blinking with 0.5 Hz, 470 lm

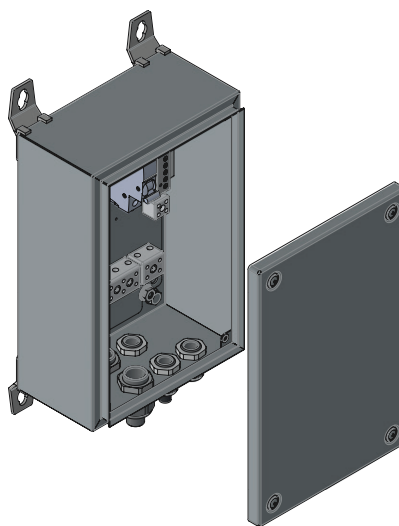
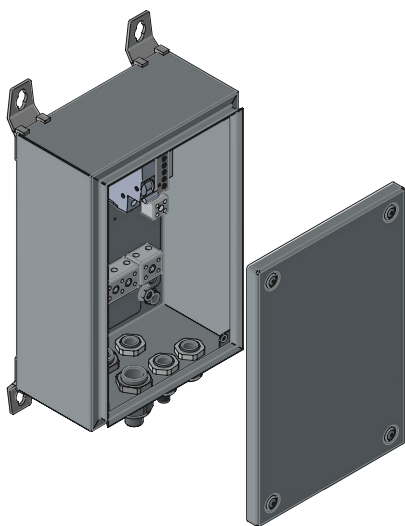
### Control unit «DALI2», item no. 861946

Stainless steel cabinet (AISI 316), with:

- LED driver 240V DALI2
- blinking relay 0.5 Hz
- degree of protection: IP66
- impact resistance: IK08
- dimensions: 200×300×135 mm
- cable glands: 4×M20 (cable Ø 6-12 mm)  
2×M25 (cable Ø 13-18 mm)

Function:

- normal situation: constantly lit, 235 lm
- in case of incident: blinking with 0.5 Hz, 470 lm



For more details ask for the technical data sheets and electrical diagram.



**THE  
SOLUTION  
PARTNER**

**GIFAS-ELECTRIC GmbH**  
Dietrichstrasse 2  
CH-9424 Rheineck  
  
+41 71 886 44 44  
info@gifas.ch  
www.gifas.ch