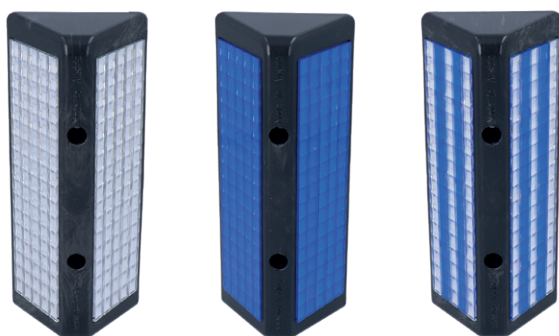


Wildlife warning reflector



The headlights of an approaching vehicle strike the wildlife warning reflectors set up on both sides of the road. The light from the wildlife warning reflectors is directed away from the road without the driver being aware of this. This creates an optical fence which warns the animals of danger. The driver is not distracted by the wildlife warning reflectors at any time and his vision is not affected.

Product features

- maximum reflection values
- successfully tested system for preventing wildlife collisions

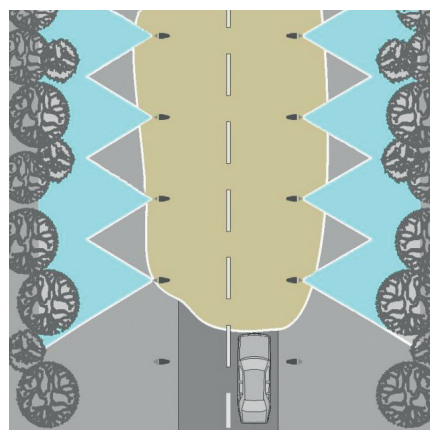
Technical Data

Colours:	white, blue, white/blue
Material:	ASA
Dimensions H×L×W:	82×86×60mm
Fixing:	2 pcs. V2A-Screw (Included in delivery)

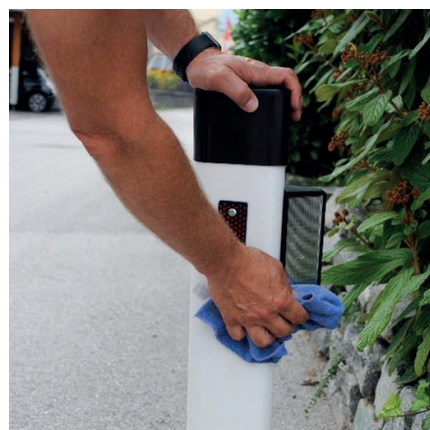
Cleaning and maintenance

Exhaust gases, pollen and dust contaminate the wildlife warners and reduce their visual warning effect. Vegetation could cover reflector posts and thereby reduce the incoming light from the headlights and the reflection of the wildlife warner.

Regular maintenance is therefore indispensable and important for road safety. Recommended cleaning interval: twice a year.



Reflection characteristic of the wildlife warners



Cleaning and maintenance should be carried out twice a year

Sortiment

- 860909 ✓ Wildlife warning reflector white
- 860910 ✓ Wildlife warning reflector blue
- 860911 ✓ Wildlife warning reflector white/blu

