

04 01
DETAILED CATALOGUE

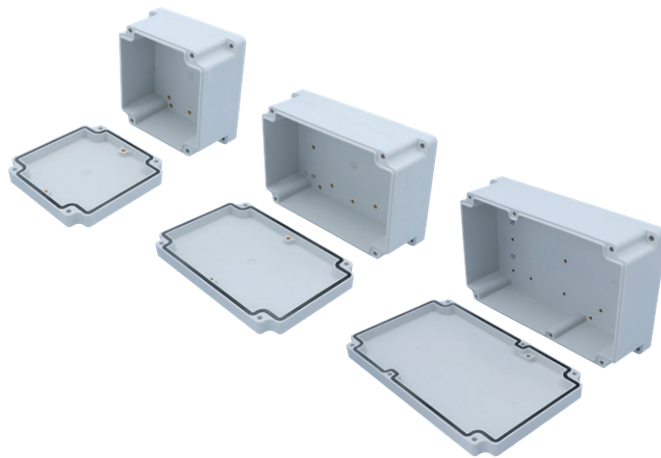


Plastic junction and distribution boxes

ELECTRIC SOLUTIONS

V0625

Glass fibre reinforced polyester junction and distribution boxes



Due to many customer requests we have extended our product range in collaboration with external specialists. We proudly present you our fiberglass reinforced polyester junction boxes, which correspond to highest standards.

Besides our approved hard rubber product range we are now able to fulfill highest chemical and mechanical demands, especially for such systems as in tunnels, in civil engineering, and in chemical and petrochemical industry.

Junction boxes GREY, FE05

Design approved to IP66/68

Along to Test Report APM Technica: APM_BE_3301389 water and dust in accordance with DIN EN 60529:2014

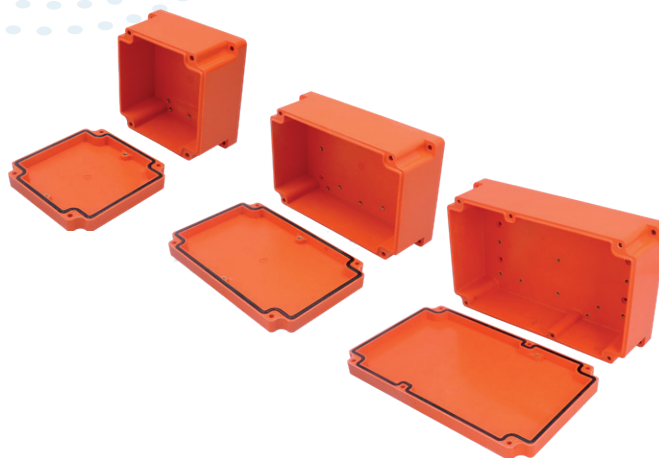
As a result of the higher protection category and the certification according to DIN 4102 Part 12, the boxes are ideal for adaptive, lane and safety lighting, especially in the national road network and tunnels - individual equipment to customer requirements possible.

Special features

- safety insulated
- impact-resistant
- UV resistant - halogen free
- resistant to aging and temperature
- resistant to oil and acid
- widely resistant to chemicals
- flame retardant, self-extinguishing
- flame resistant, non-combustible
- with 4 exterior assembly and fixing points
- max. equipment: screw terminals up to 35 mm²

- ✓ = from stock, offer subject to prior sale
- further versions on request.

Glass fibre reinforced polyester junction and distribution boxes fireproof



Due to many customer requests we have extended our product range in collaboration with external specialists. We proudly present you our fire-proof fiberglass reinforced polyester junction boxes, which correspond to highest standards.

Besides our approved hard rubber product range we are now able to fulfill highest chemical and mechanical demands, especially for such systems as in tunnels, in civil engineering, and in chemical and petrochemical industry.

Junction boxes ORANGE, E30

Design approved to IP66/68

Along to Test Report APM Technica: APM_BE_3301389 water and dust in accordance with DIN EN 60529:2014

Functional integrity E30 based on DIN 4102 Part 12

According to report MPA-Dresen 20190264 in accordance with DIN EN 1363-1; 2012-10

As a result of the higher protection category and the certification according to DIN 4102 Part 12, the boxes are ideal for adaptive, lane and safety lighting, especially in the national road network and tunnels - individual equipment to customer requirements possible.

Special features

- safety insulated
- impact-resistant
- UV resistant - halogen free
- resistant to aging and temperature
- resistant to oil and acid
- widely resistant to chemicals
- flame retardant, self-extinguishing
- non-flammable
- with 4 exterior assembly and fixing points
- max. equipment: screw terminals up to 35 mm²
- audited functional integrity of at least 30 minutes at temperatures up to 900°C.

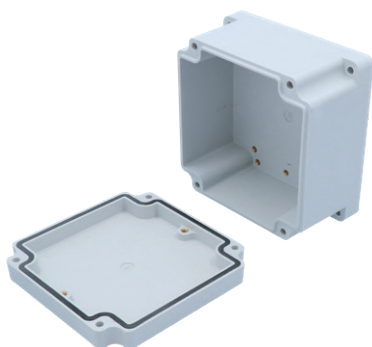
Polyester junction and distribution boxes GRP type 1616

FE05

Technical Data

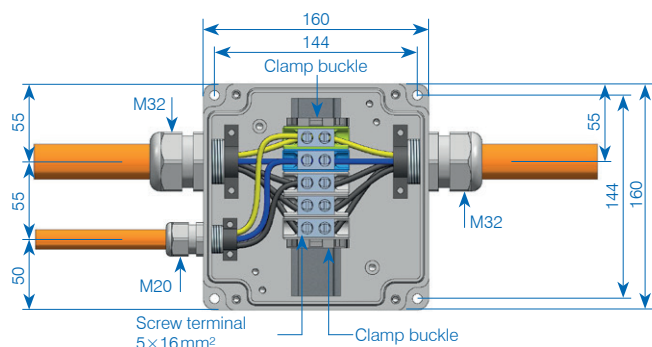
Specification box type 1616 FE05:

- junction box polyester glass fiber reinforced
- colour: grey RAL 7035
- protection category: IP68
- W×H×P: 160×160×100 mm



Item no.: 205672

TBA 1616 – 160×160×100 mm/5×16 mm²

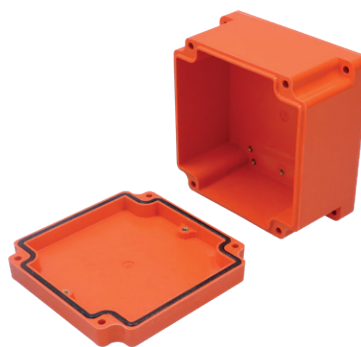


E30

Technical Data

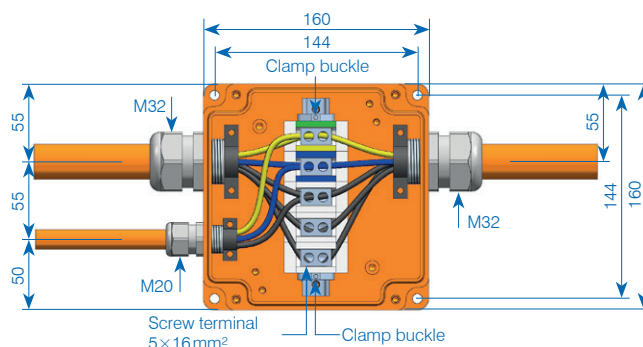
Specification box type 1616 FE180/E30:

- junction box polyester enhanced glass fiber reinforced
- colour: orange RAL 2009
- protection category: IP68
- W×H×P: 160×160×100 mm



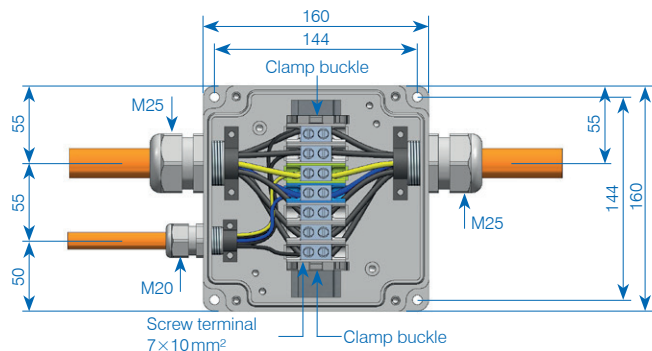
Item no.: 205667

BFA 1616 – 160×160×100 mm/5×16 mm²



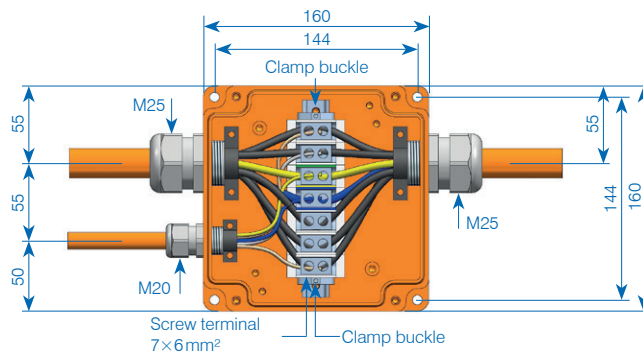
Item no.: 205673

TBA 1616 – 160×160×100 mm/7×10 mm²



Item no.: 205668

BFA 1616 – 160×160×100 mm/7×6 mm²



Polyester junction and distribution boxes GRP type 2516

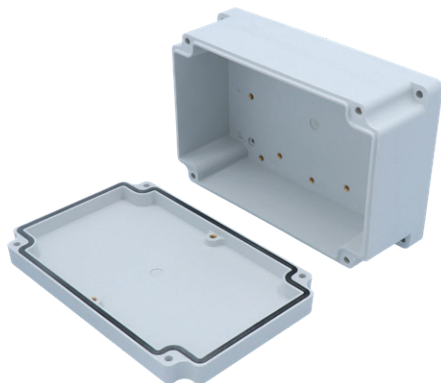
FE05

E30

Technical Data

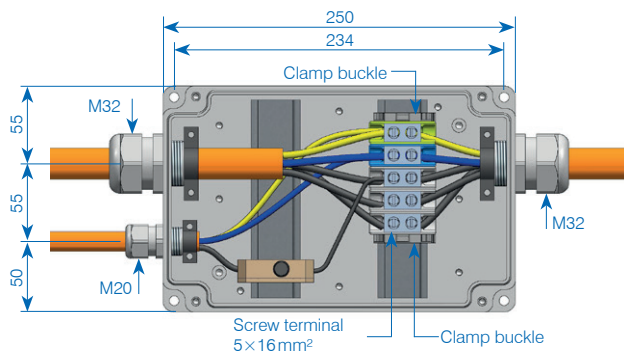
Specification box type 2516 FE05:

- junction box polyester glass fiber reinforced
- colour: grey RAL 7035
- protection category: IP66
- W×H×P: 250×160×100 mm



Item no.: 205670

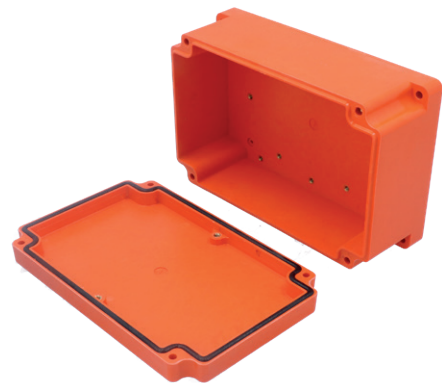
TBA 2516 – 250×160×100 mm / 5×16 mm²



Technical Data

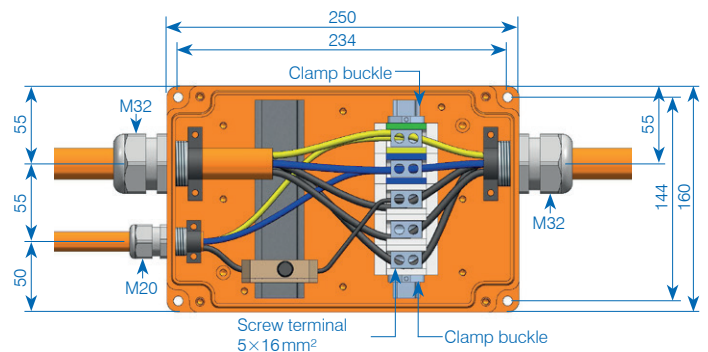
Specification box type 2516 FE180/E30:

- junction box polyester enhanced glass fiber reinforced
- colour: orange RAL 2009
- protection category: IP66
- W×H×P: 250×160×100 mm



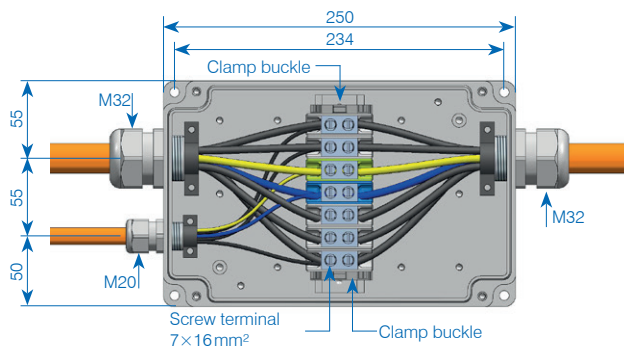
Item no.: 205665

BFA 2516 – 250×160×100 mm / 5×16 mm²



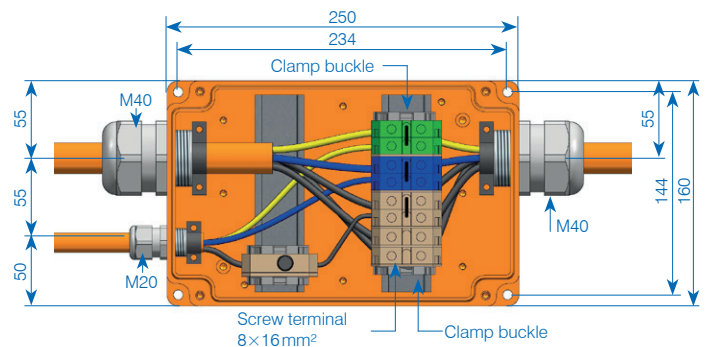
Item no.: 205671

TBA 2516 – 250×160×100 mm / 7×16 mm²



Item no.: 205666

BFA 2516 – 250×160×100 mm / 8×16 mm²



Polyester junction and distribution boxes GRP type 3018

FE05

Technical Data

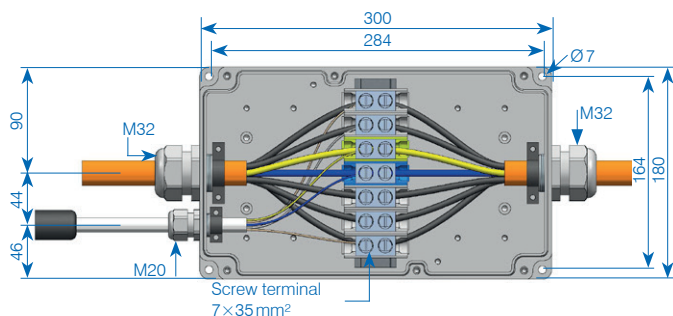
Specification box type 3018 FE05:

- junction box polyester glass fiber reinforced
- colour: grey RAL 7035
- protection category: IP66
- W×H×P: 300×180×100 mm



Item no.: 189926

TBA 3018 – 300×180×100 mm/7×35 mm²



E30

Technical Data

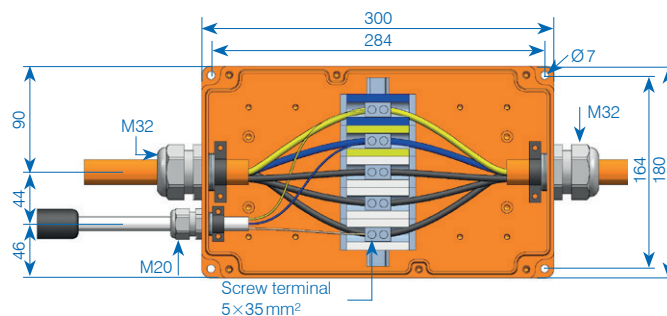
Specification box type 3018 FE180/E30:

- junction box polyester enhanced glass fiber reinforced
- colour: orange RAL 2009
- protection category: IP66
- W×H×P: 300×180×100 mm



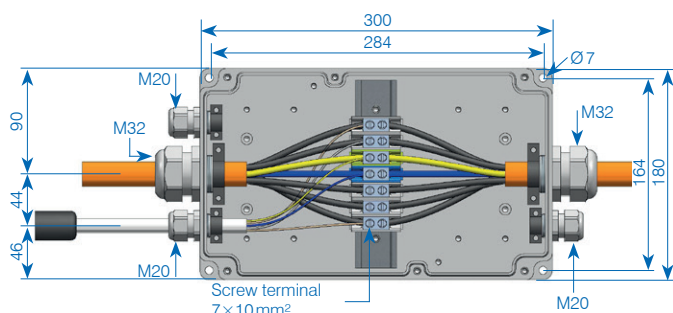
Item no.: 189886

BFA 3018 – 300×180×100 mm/5×35 mm²



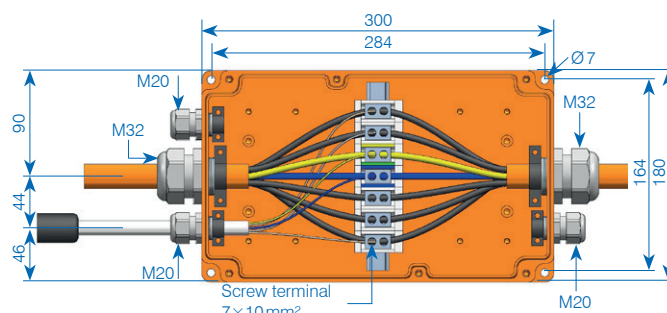
Item no.: 189883

TBA 3018 – 300×180×100 mm/7×10 mm²



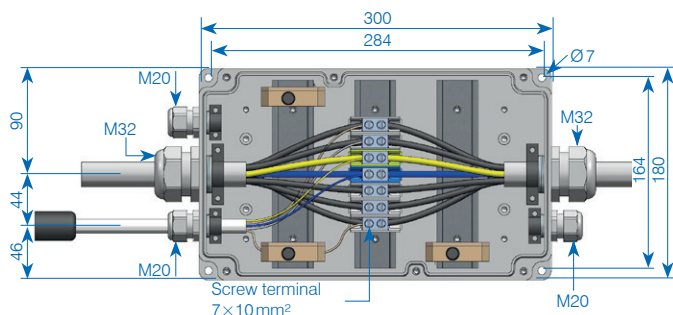
Item no.: 189887

BFA 3018 – 300×180×100 mm/7×10 mm²



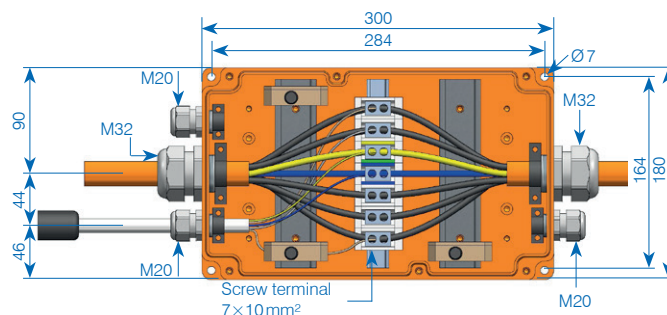
Item no.: 189885

TBA 3018 – 300×180×100 mm/7×10 mm²



Item no.: 189888

BFA 3018 – 300×180×100 mm/7×10 mm²

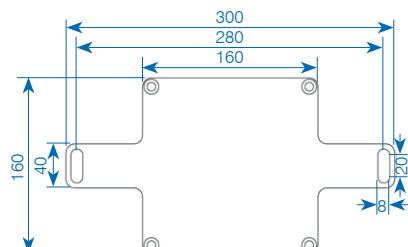


Accessories: mounting plates and brackets

A selection of mounting plates and brackets is available for quick and easy installation of the junction boxes on ducts, tunnel ceilings or mounting brackets. Customised solutions are available on request.

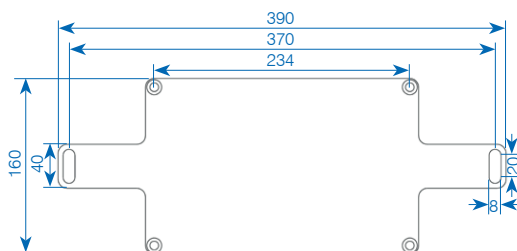
Item no. 207053 ✓

Mounting plate, crosswise, V4A stainless steel for type 1616



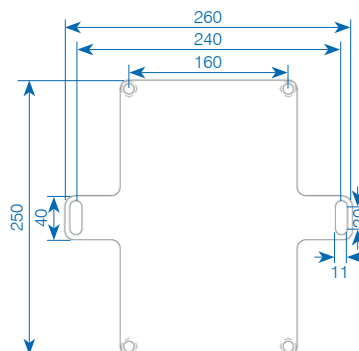
Item no. 207052 ✓

Mounting plate, crosswise, V4A stainless steel for type 2516



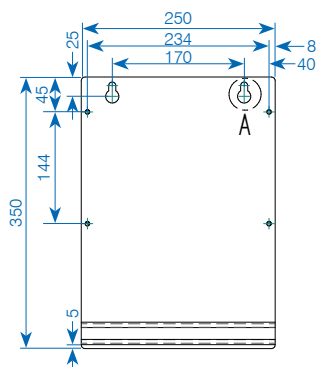
Item no. 205559

Mounting plate, vertical, V4A stainless steel for boxes type 2516



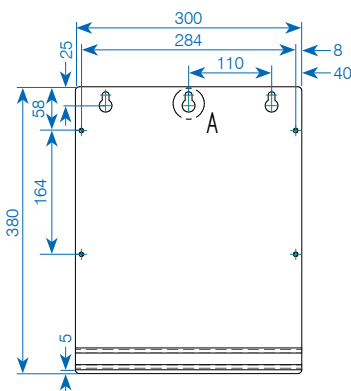
Item no. 211964 ✓

Mounting plate, vertical, V4A stainless steel for type 3018



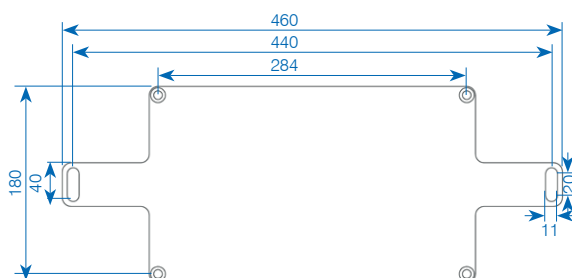
Item no. 191046 ✓

Mounting plate, vertical, V4A stainless steel for type 3018



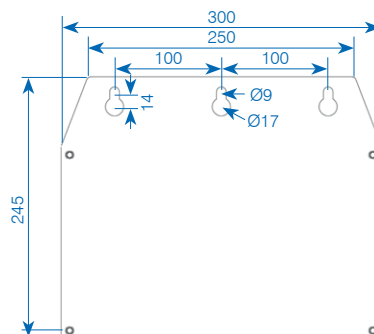
Item no. 189869 ✓

Mounting plate, crosswise, V4A stainless steel for type 3018



Item no. 206819

Mounting plate, crosswise, V4A stainless steel for type 3018





**THE
SOLUTION
PARTNER**

GIFAS-ELECTRIC GmbH
Dietrichstrasse 2
CH-9424 Rheineck

+41 71 886 44 44
info@gifas.ch
www.gifas.ch