

09 16
DETAILED CATALOGUE



VisuLED HOME

LIGHTING SOLUTIONS

V0625

In general /Technology



Recessed LED light for garden, wall and ceiling

A modern and effective spotlight with unlimited uses. State-of-the-art, oriented towards quality, expertise, technical advances and aesthetic demands with a balanced price-performance ratio.

Suitable for use inhouse as ceiling, wall and floor lights, and also surrounding the house to lend a vibrant effect to your garden and home while also satisfying increasing safety requirements.

Why VisuLED HOME?

Quick and easy installation thanks to a plug-in throughout connection concept.

No electrical expertise is required for installation. Various power supply units with plug-in connection cables are available. Branches can be created using T-adapters at each plug connection. The last luminaire in a string must be protected against moisture with a protective cap. Thanks to 48V safety extra-low voltage, connection cables can be laid directly in the ground without a protective conduit. The 9mm safety glass is weather-resistant, scratch-resistant and extremely durable. The VisuLED HOME is dimmable. The modular system offers a wide range of mounting options: with a swivel bracket on the wall, ceiling, floor, post or plastic ground spike; for direct upward illumination, also with ground holders or flush with the ground. A slotted protective hose can be retrofitted to protect against rodents. An installation kit is available for ceiling and wall mounting. A flat mounting ring (step hole required) or an attachment ring (simple hole sufficient) is available for floor installation.

VisuLED HOME composition

The housing is made from high-quality die-cast aluminium, the surface is anodised with a protective lacquer, a V4A covering ring is pressed on the head side and shatterproof glass (9mm) covers the housing at the front. Electronics and LED diodes are firmly cast with a 2K compound.

The light comes with 2 connection cables (2P), 300 mm long (supply line with plug 2P, outgoing feeder with coupling 2P).

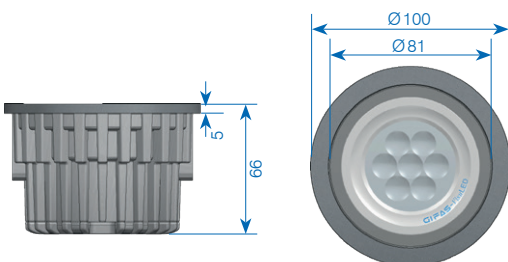
Product/system characteristics

- very low power consumption
- long lasting (>50'000 h)
- dimmable with all commercially available PWM dimmers (200 - 1'000 Hz)
- the whole system is operated at low voltage (<48V)
- all electrical connections are pluggable – they can therefore be installed and operated by everyone

Technical data

Operating voltage:	20 - 48VDC
Current consumption:	420mA @ 24VDC
Output:	10W
Protection category:	IP67
Protection class:	III
Illuminant:	4 PowerLED
Luminous flux:	720lm (measured at spot 4'000K)
Light colours:	warm white 3'000K comfort white 4'000K
Colour reproduction:	CRI 80
Lenses:	Spot 10° /Wide 38°
Temperature range:	-40°C to +55°C
Weight:	710g

Dimensions



- ✓ = from stock, offer subject to prior sale
- further versions on request.

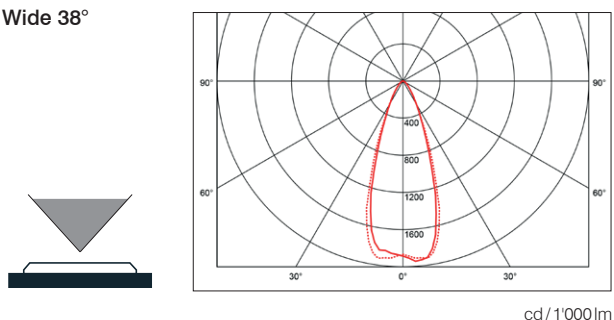
Product range / System



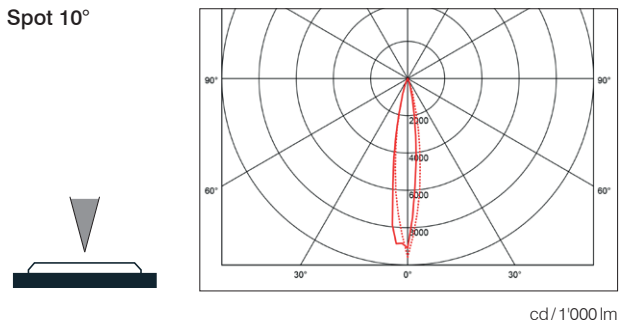
Application examples as indirect lighting¹ on house facades², as a ceiling light³ or for effective lighting of plants⁴.

Light beam characteristic

Wide 38°

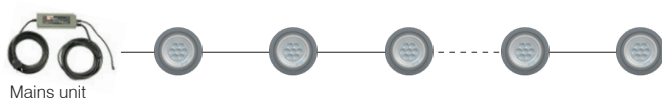


Spot 10°

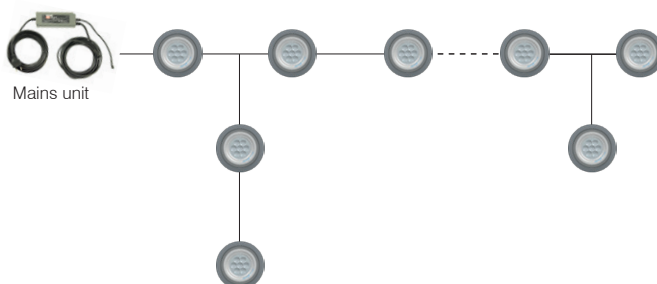


System setup

in sequence (possible to dim with PWM dimmers)



with branching (PWM-dimming could cause malfunctions)

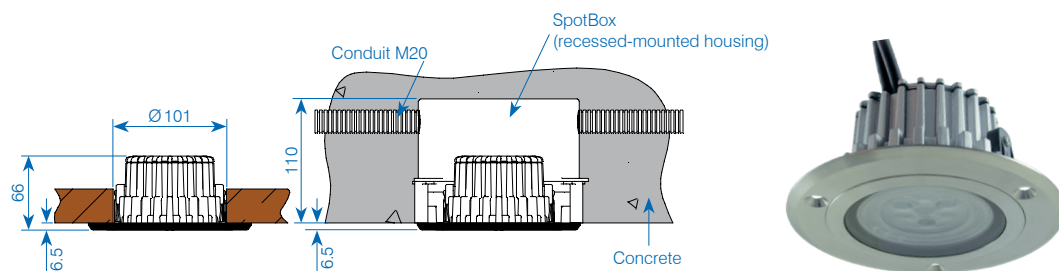


Assortment

N° art.	Designation	Light colour	Optics
860104 ✓	VisuLED HOME complete, incl. 2 connection cables 300 mm	3'000K warm white	Spot
860105 ✓	VisuLED HOME complete, incl. 2 connection cables 300 mm	4'000K comfort white	Spot
860106 ✓	VisuLED HOME complete, incl. 2 connection cables 300 mm	3'000K warm white	Wide
860107 ✓	VisuLED HOME complete, incl. 2 connection cables 300 mm	4'000K comfort white	Wide

Special applications

As a ceiling light in wood/concrete

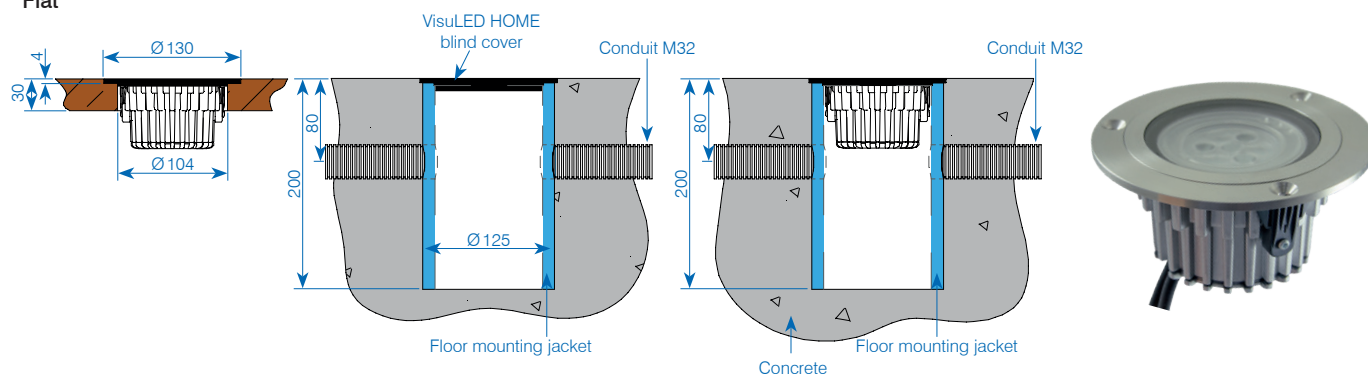


Assortment

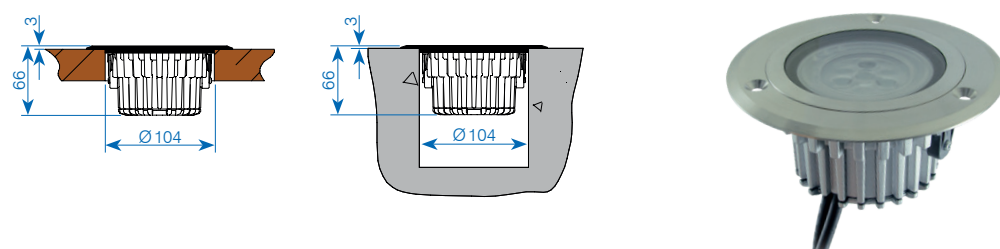
860101 ✓ VisuLED HOME recessed set, Ø 145×6.5mm, anodised aluminum, complete, incl. fixing material

As a recessed floor light in wood/concrete

Flat



Attachment



Assortment

860195 ✓ V4A flat ground cover ring set, Ø 130×9mm complete, incl. fixing material

860196 ✓ V4A ground cover ring set, Ø 140×9mm complete, incl. fixing material

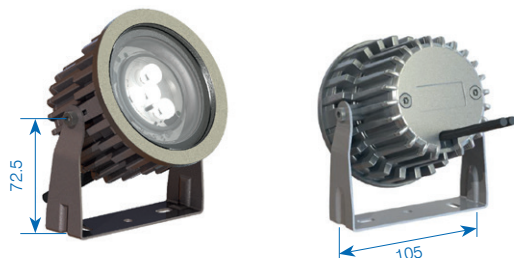
228032 ✓ Floor mounting jacket PE Ø 125×196mm with 2 drills Ø 32mm

860198 ✓ Blind cover (black) for floor mounting jacket

Assembly

On a pivotable mount

This mount is required for a lot of the application possibilities. Therefore, assembly is possible on a balustrade, wall, or ceiling. The possible pivot angle is 360°.



Assortment

860108 ✓ V2A VisuLED HOME, pivotable mount set complete, incl. fixing material

On a ground spike

The VisuLED is placed on the ground spike using the pivotable mount. The illumination can therefore be perfectly aligned and, if necessary, easily displaced.

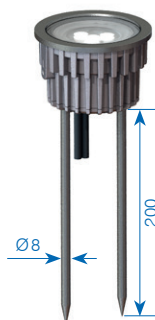


Assortment

126197 ✓ Ground spike (280 mm), synthetic, complete incl. screws and washers

Directly in the ground

In order for the position to be stabilised in loose earth or turf, use of the upholder is recommended (used in pairs). These can be screwed directly onto the housing and are made of V2A steel.



Assortment

860114 ✓ 1 pc. upholder/spike V2A VisuLED HOME, Ø8×200 mm complete (to be used pairwise)

Connecting material, power supplies

Pluggable connection cables

A special PUR extension $2 \times 0.75 \text{ mm}^2$ is used as a cable connection. The utilised plug connections are operated in protection class IP68. The diameter on the plug side is $\varnothing 15 \text{ mm}$, on the connector side $\varnothing 19 \text{ mm}$.

There is a T adapter for a branch and a protective cap for an unused outgoing feeder – both also IP68.



Assortment

860215 ✓ Extension cable, length 1 m

861040 ✓ Extension cable, length 3 m

860115 ✓ Extension cable, length 5 m

860116 ✓ Extension cable, length 10 m



Assortment

860128 ✓ T-Adapter IP68, 2P - 12A, 250V without protective cap

860117 ✓ Protective cap IP68 for cable cover

860125 ✓ Flexible hose «rodent protection» PA6 $\varnothing 10.3 \text{ mm}$, black, non-halogen

860127 ✓ Retractor tool for installation conduit „rodent protection”

Pluggable power supplies

The maximum length for the layout is 200 m (be aware of voltage drops). The VisuLED HOME light fixtures can be dimmed in combination with a commercial 1 - 10V controller.



Assortment

860123 ✓ Power supply VisuLED HOME, 230VAC/36VDC - 60 W, IP67, connection cable 5 m, cable coupling 5 m, $150 \times 53 \times 35 \text{ mm}$

860124 ✓ Power supply VisuLED HOME, 230VAC/36VDC - 90 W, IP67, connection cable 5 m, cable coupling 5 m, $171 \times 63 \times 37.5 \text{ mm}$

860290 ✓ Power supply VisuLED HOME, 230VAC/36VDC - 120 W, IP67, connection cable 5 m, cable coupling 5 m, $191 \times 63 \times 37.5 \text{ mm}$

Connection boxes, rotary controller

Connection boxes



Assortment

860164 ✓ Connection box VisuLED HOME, 254×180×84 mm, NG 230 VAC/36 VDC - 60 W, IP66, connection cable 5 m, 2 outlets

860129 ✓ Connection box VisuLED HOME 254×180×84 mm NG 230 VAC/36 VDC - 120 W, IP66, connection cable 5 m, 2 outlets

Connection boxes with timer



Assortment

860163 Connection box/timer VisuLED HOME, 254×180×84 mm, NG 230 VAC/36 VDC - 60 W, IP66, connection cable 5 m, 2 outlets

860194 Connection box/timer VisuLED HOME, 254×180×84 mm, NG 230 VAC/36 VDC - 120 W, IP66, connection cable 5 m, 2 outlets

218922 Connection box/remote control VisuLED HOME, 254×180×84 mm, NG 230 VAC/36 VDC - 60 W, IP66, connection cable 5 m, 3 outlets, incl. remote control

215080 Connection box/remote control VisuLED HOME, 254×180×84 mm, NG 230 VAC/36 VDC - 120 W, IP66, connection cable 5 m, 2 outlets, incl. remote control

For dimming function



Assortment

104780 Recessed-mounted rotary controller 1 - 10 VDC Edizio white



**THE
SOLUTION
PARTNER**

GIFAS-ELECTRIC GmbH
Dietrichstrasse 2
CH-9424 Rheineck

+41 71 886 44 44
info@gifas.ch
www.gifas.ch