

09 26
DETAILED CATALOGUE

SecuLED

LIGHTING SOLUTIONS

V0625

Content

Introduction

Introduction SecuLED	3
----------------------	---

SecuLED

System	4
Technology	5
Applications	6
Assortment	7

System components – Control units

4-channel control unit	8
Remote control to 4-channel control unit	8
Power supply to 4-channel control unit	9

System components – Mounting

Junction boxes	10
Installation material – Protective hose	10
Joint profile	11
Sealing compound	11

Introduction



Our product line of optical guidance devices is applicable in tunnels, roundabouts or on the road in general. We have detailed information, documentation, certificates for our system MarkLED which we would be appreciate to send if you are interested.

Why optical guidance systems?

An optical guidance device improves recognition of lanes or obstacles, particularly during times of poor visibility (at night, fog, etc.) as well as vulnerable traffic areas such as tunnels, curves, roundabouts or traffic islands. The signals provide a very high degree of safety for traffic.

The system complies with current regulations (BAST Germany, FEDRO Switzerland e.g.), and are continuous EMC-approved, which means, that the system functions with cables/wires and is non-inductive, so electromagnetic fields are excluded.

The wired systems are installed directly in the road surface. However, it is important that the installation area is not constantly driven over.

Our recess-mounted lamps are compatible with all GIFAS systems. They complement each other ideally and require the same system components, such as a control unit, feeder cable, etc.

All GIFAS systems can be dimmed across a continuous scale using the control unit or remote control.

Your advantages with this GIFAS system

- EMC-approved, no inductive interference
- quick and easy installation
- latest LED technology, very low power consumption
- vandal-proof, reinforced synthetic material/V4A Investment casting
- dimmable by control unit
- interoperable with all LED guidance systems
- modular construction, low-maintenance
- often set in systems in different applications
- thereby high product- and application know-how

Our services

- many years of know-how, experienced Project Manager
- individual advice, also on site
- large standard range, individual solutions possible
- expert advice on installation and bringing into service
- creating CAD documents, voltage drop calculations and tunnel disposals
- own service team with professional equipment and many years of know-how
- e-Equipe with professional equipment and years of expertise



In contrast to the interruption-free current transmission, as in the MarkLED system, the conventional wired system is used for the SecuLED product series. The modules can be wired directly and can be looped. The two-part construction facilitates the maintenance and repair effort massively. When laying highly flammable and heat-resistant cables, grooves must be milled into the pavement or introduced in pipes designed for new plants for subsequent installation. The lamp modules are installed on the kerb in the immediate proximity of the edge of the road. The brightness of the lamp modules can be easily adjusted using the control units and can be controlled in all areas via an automatic light control system or direct control from the tunnel monitoring and control complex.

Mounting plate

The engineering design takes into account the various supply and mounting requirements. Three enclosed cable sleeves, formed by way of injection moulding have been provided during manufacture for the cables to be fed through. The four attachment points have easily breakable seals over them. The upper part of the mounting plate is sealed using two circular labyrinth seals. The upper part is attached in the threaded socket of the mounting plate using two captive screws.

Cable connection

Upper part made of polyamide, fully fitted in accordance with selection, electronics encapsulated with freely accessible 2.5 mm² spring-type clamps, with direct looping. Mounting plate made of polyamide, two surrounding O-ring seals, sealed cable inlets (for 2 x 2.5 mm² cables), four sealed mounting holes of diameter 5 mm.

Connection technology

The cables are connected by using spring-type clamps. A separate clamp is provided for the supply line and additional cables. The cables can be disconnected at any time by applying slight pressure to the release mechanisms.

Sealing technology

The overall design of the individual components is engineered for high tightness. Provided that installation is carried out by a qualified technician, protection class IP67 is achieved.

Control units

The control units required for supplying and/or controlling the light modules are small and space-saving and can usually be integrated in existing distribution systems or control cabinets. A small distributor may be installed as needed.

Product documentation

Installation instructions

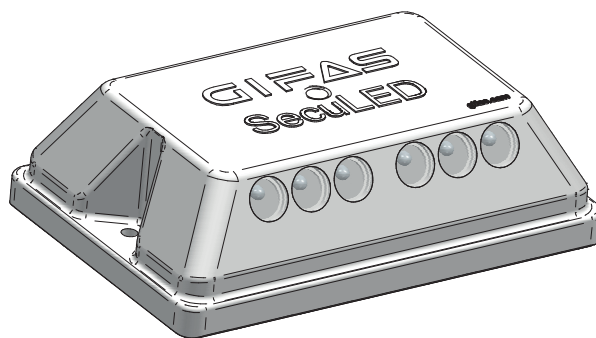


Declaration of conformity




Test report



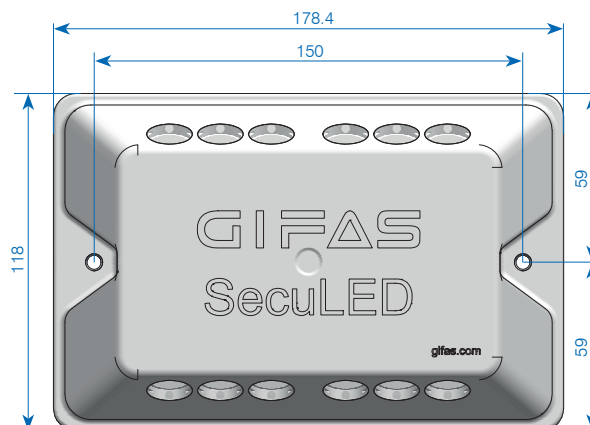
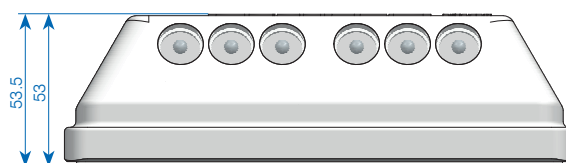


Technical data

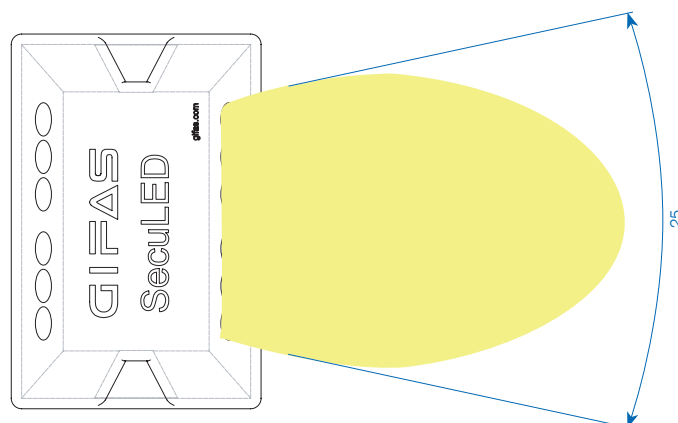
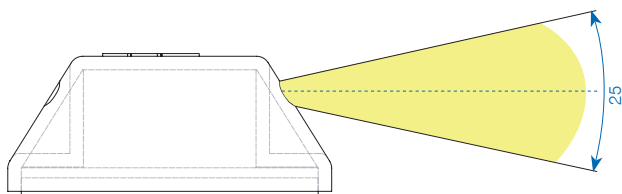
Light colour:	white (5'100K)
Light intensity:	30cd
Illuminant:	12 LED
Operating life LED:	50'000h
Protection category:	IP67
Protection class:	III
Operating voltage:	24VDC (range 16-40VDC)
Power consumption:	40mA
Dimensions:	178.4×118×53.5mm
Upper part:	polyamide, white
Lower part:	polyamide, white

 A detailed datasheet from system components is available on request.

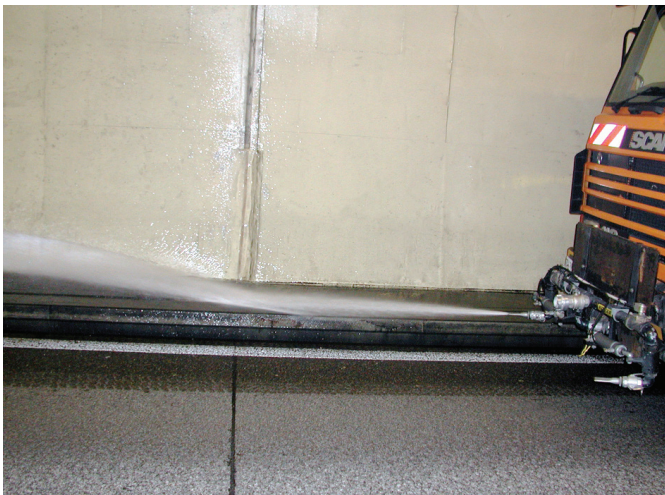
Single components



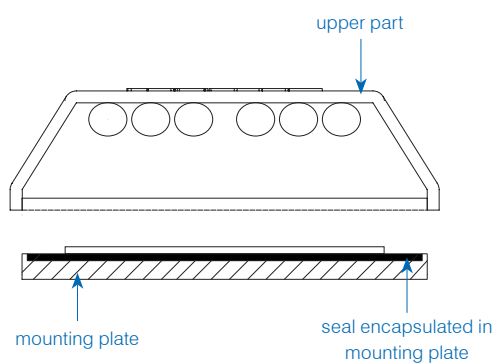
Scheme light emission



Applications



Assortment



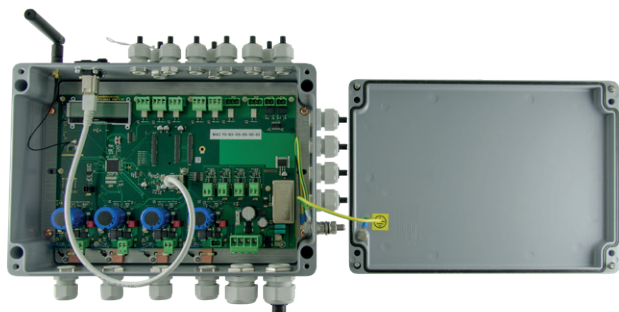
Assortment

860462	SecuLED light module 40 mA/double-sided 6×white, 5'100 K
860463	SecuLED light module 60 mA/6×white, 5'100 K/6×red, 625 nm
860464	SecuLED light module 80 mA/double-sided 6×green, 525 nm
860465	SecuLED light module 80 mA/double-sided 6×blue, 470 nm

Other versions on request

System components – Control units

4-channel control unit



The control unit for all GIFAS systems is designed for 4 output lines. Each channel can be loaded with up to 10A.

- **Supply:** A 230VAC/24-48VDC power supply device with a nominal output current of 40 A is installed upstream from the control unit.
- **Error messages:** Each channel has a relay with SPDT (potential free) assigned to the signaling of error messages.
- **External blinking contacts:** By default, two external flashing signals (24-60VDC) can be connected and transferred to the outgoing lines (synchronisation with flashing signal).
- **Operating mode:** The control unit has 8 or 31 different modes of operation.
- **Failure rate:** By failure rate detection, the lights can be tested for their functionality. The control unit measures the total power consumption of the respective channel. If the power consumption drops to a preset value, the fault message can be detected via a change-over contact (potential-free).
- **Functions:** One of the following functions can be assigned to each channel in each mode:
 - Continuous lighting: 100%
 - Dimming: adjustable from 1-99%
 - Flash: adjustable from 0.1-9.9Hz
 - Lightning: adjustable from 1-99ms
 - Running light: running light direction, dimming 1-99%, Light duty cycle 100ms-10sek, delay in lighting 100ms-10sek, Switch-on delay 0-999sek, duty cycle 0-999sek
 - Off
- **Programming:** the control unit can be optionally parametrised and read out via the web interface or the optionally available radio programming unit.
 - Web interface: if the control unit is connected to the network via RJ45 Cat. 6a, all parameters can be set and read out via a web browser.
 - Radio programming unit: The parameters can also be set by the radio programming unit.

Technical data

Input voltage:	18-48VDC
Supply current:	40A, 4 channels à 10A
Rated power max.:	1'920VA
Power supply:	external
Protection category:	IP65
Dimensions:	330×230×110mm

Assortment

860594	4-channel control unit in cast aluminium housing, IP65, 18-48VDC/4×10A, excl. power supply
---------------	--

Remote control to 4-channel control unit



Programming device with menu guide for set-up, programming and status recognition of the control unit. Communication with the control unit occurs through radio.

All necessary functions can be set up and assigned through the menu structure. No special knowledge is required to operate it. The connection between the control unit and the programming device is bi-directional, i.e. the current settings can be transferred from one to the other.

The buttons «↑», «↓», «☒» and «✓» are used to navigate the system. The range is approx. 3m.

The menu is available in 4 languages: German, English, French and Italian.

Technical data

Operating voltage:	4.5VDC, 3 batteries AAA
Radio frequency:	2.4-2.525GHz
Life of battery:	> 1 year in standby mode
Material:	ABS
Protection category:	IP40
Protection class:	III
Dimensions:	73×140×32mm

Assortment

860460	Remote control to 4-channel control unit
---------------	--

System components – Control units

Power supply to 4-channel control unit

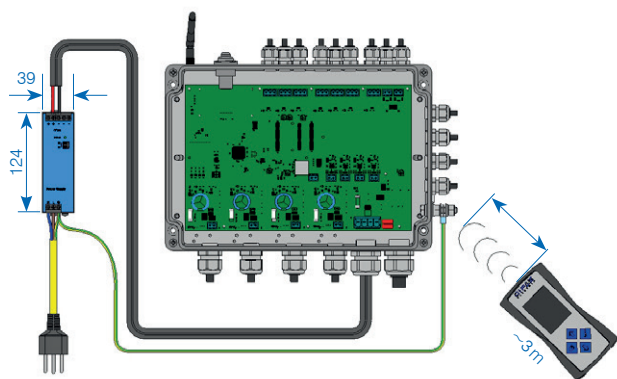


A power supply is installed upstream from the 4-channel control unit. The power supply is equipped with integrated protection against overloading and short-circuiting, with automatic or manual reset. The power supply conforms to CEE regulations and also has UL and/or CSA approval.

Technical data

Input voltage:	230 VAC (range 100 - 240 VAC)
Output voltage:	24 / 48 VDC
Output current:	6.7 / 10 / 20 A
Connections primary:	screw terminals 4 mm ²
Connections secondary:	screw terminals 4 mm ²
Status display:	LED green
Installation:	quick fastening for DIN rail 35 mm
Protection category:	IP20 (IP42 with additional cover)
Protection class:	I
Dimensions:	different, see designation below

 A detailed datasheet on the power supply is available on request



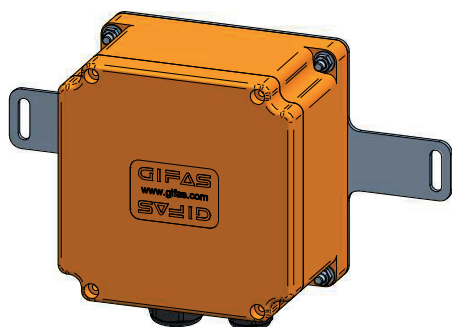
Assortment

163193	Power supply 230 VAC / 24 VDC - 10 A / 240 W 39 × 124 × 117 mm
136629	Power supply 230 VAC / 24 VDC - 20 A / 480 W 65 × 124 × 127 mm
192133	Power supply 230 VAC / 36 VDC - 6.7 A / 240 W 39 × 124 × 127 mm

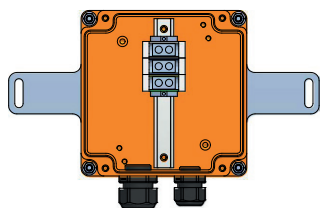
Other versions on request

System components – Mounting

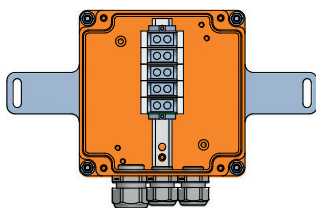
Junction boxes



The safety cable must be connected from control center to the GIFAS system cable when connecting the signal units to the infrastructure. A special junction box is required for these connections. This can be installed in the cable trunks in the tunnel shoulder or at another suitable point. An E30/E60 junction box is usually required for this application. The size of junction box depends on the feed-in cable used as well as the number of outlets.



Item no. 207643



Item no. 208762

Assortment

207643	Junction box polyester FE180/E30 type 1616, orange 160×160×100 mm, 3×6 mm ² , IP66/68, 1×M20/1×M25 – 1 outlet system cable
208762	Junction box polyester FE180/E30 type 1616, orange 160×160×100 mm, 5×6 mm ² , IP66/68, 2×M20/1×M25 – 2 outlets system cable

Installation material – Protective hose



Item no. 035976



Item no. 128266

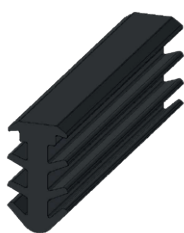
Depending on the type of installation, the system cable can also be conducted in an installation tube.

Assortment

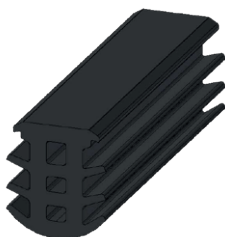
035976	Installation tube Ø25/19 mm, flexible (selling unit = 100 m)
128266	Protective hose PA6, Ø21.2/16.5 mm, flexible, selling unit = 50 m, UV resistance, operating range of temperature –40 °C to 120 °C, temporarily over 150 °C

System components – Mounting

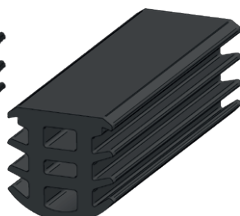
Joint profile



Item no. 116753



Item no. 140862



Item no. 155809

The milled groove of the optical guidance system must be sealed against environmental conditions. A simple and low-cost solution is to use the halogen-free GIFAS system profile made of EPDM. This is inserted in the slot. It is self-locking and available in three different widths. A stable and smooth slot with slot widths of 6 -16 mm is the prerequisite for use.

Technical data

Material properties:	halogen-free, no corrosive and toxic gases
Shore hardness A:	70° ±5%
Special weight:	1.23 kg/l
Elongation at break:	237% DIN 53504
Breaking stress:	11.2 MPa DIN 53504

Item no. 116753

Exterior dimensions:	9.3 mm × 17.1 mm
Groove width:	6 - 8 mm
Nominal section:	89 mm ²
Weight:	109 kg/km

Item no. 140862

Exterior dimensions:	14.5 mm × 17.1 mm
Groove width:	10 - 12 mm
Nominal section:	146 mm ²
Weight:	177 kg/km

Item no. 155809

Exterior dimensions:	17.35 mm × 17.5 mm
Groove width:	14 - 16 mm
Nominal section:	171 mm ²
Weight:	254 kg/km

Assortment

116753	Joint profile EPDM 70° Shore, for groove 6 - 8 mm, 9.3 × 17.1 mm, black
140862	Joint profile EPDM 70° Shore for groove 10 - 12 mm, 14.5 × 17.1 mm, black
155809	Joint profile EPDM 70° Shore for groove 14 - 16 mm, 17.35 × 17.5 mm, black

Joint sealing compound



The recommended system sealing compound is heated to 160° – 180° C while being constantly mixed. The compound is applied using a spouted container or grouting lance. Excess compound must be removed by scraping once it has fully cooled.

Technical Data

Colour:	black
Form of delivery:	1 box with 24 × cubes à 700 g
Sealing temperature:	160° C - 180° C
Weight per unit volume:	1.2 g/cm ³

Assortment

208907	Sealing compound TOK-Melt N2 (box with 24 cubes à 700 g)
---------------	--



**THE
SOLUTION
PARTNER**

GIFAS-ELECTRIC GmbH
Dietrichstrasse 2
CH-9424 Rheineck

+41 71 886 44 44
info@gifas.ch
www.gifas.ch